

Lance fungicide

technology sheet

A proactive approach to disease control in a range of crops including canola, dry beans and lentils.

- Preventative protection against diseases including sclerotinia, alternaria and ascochyta.
- Works on sprayed areas and moves systemically to protect treated areas as they expand.

Active ingredient

Boscalid – Group 7

Formulation

Wettable granules

One case contains

2 x 2.83 kg jugs

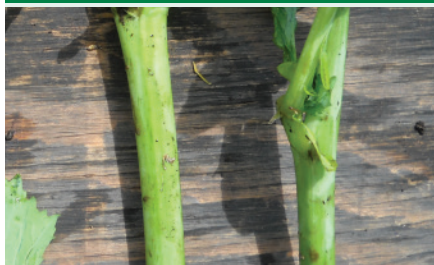
Storage

Store in cool, dry, well-ventilated area without floor drain.

Control of sclerotinia stem rot with Lance® fungicide



Untreated



Lance

Source: AgSolutions® Performance Trials, Alberta, 2012

Crops

Alfalfa (for seed production)
Canola, mustard
Chickpeas, lentils
Dry beans²
Field peas
Potatoes

Succulent beans
Succulent peas
Sunflowers

Note: For most crops, applications can be repeated if conditions are conducive for disease development. See label for details.

Staging

20 to 50% flowering
20 to 50% flowering¹
beginning of flowering
20 to 50% flowering
beginning of flowering
Apply preventatively from
tuber initiation through bulking
20 to 50% flowering
beginning of flowering
early flower

Diseases controlled

In canola and mustard.

Alternaria black spot (*Alternaria brassicae* and *raphani*), sclerotinia stem rot (*Sclerotinia sclerotiorum*)

In chickpeas and lentils.

Ascochyta blight (*Ascochyta* spp.), gray mold (*Botrytis cinerea*), white mold (*Sclerotinia sclerotiorum*)

In dry beans.²

White mold (*Sclerotinia sclerotiorum*)

In field peas.

Ascochyta blight (*Ascochyta* spp.), gray mold (*Botrytis cinerea*), mycosphaerella blight (*Mycosphaerella* spp.)

In potatoes.

Early blight (*Alternaria solani*)

In succulent beans.

Gray mold (*Botrytis cinerea*), white mold (*Sclerotinia sclerotiorum*)³

In succulent peas.

Ascochyta blight (*Ascochyta* spp.), mycosphaerella blight (*Mycosphaerella* spp.), white mold (*Sclerotinia sclerotiorum*)³

In sunflowers.

Leaf spot (*Alternaria helianthi*)⁴, sclerotinia head rot (*Sclerotinia sclerotiorum*)⁴

In alfalfa.

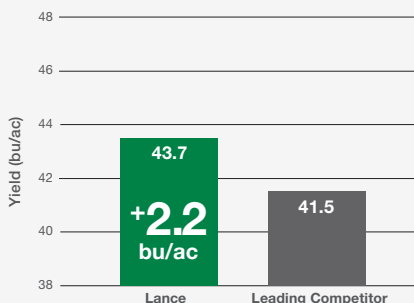
Blossom blight (*Sclerotinia sclerotiorum* and *Botrytis cinerea*), common leaf spot (*Pseudopeziza medicaginis*), leaf spot (*Leptosphaerulina briosiani*), spring black stem (*Phoma medicaginis*)

¹ To control sclerotinia stem rot and suppress alternaria black spot. Apply at late flowering to early green pod to control alternaria black spot. ² Except for soybeans. ³ Control with higher rate 227 to 312 g/ac (560 to 770 g/ha). ⁴ Suppression.

 **BASF**

We create chemistry

Increased yield with Lance fungicide vs competitor on canola



Increase yield with Lance fungicide



Untreated



Lance

Source: Lance trial, Moose Jaw, SK, 2012

For more information:

Call **AgSolutions** Customer Care at 1-877-371-BASF (2273)

Visit agsolutions.ca

Application rates

One case of Lance fungicide will treat 18 to 40 acres, depending on crop.

Canola ⁵ , mustard ⁵	142 g/ac (350 g/ha)
Chickpeas ⁶ , field peas ⁷ , lentils ⁶ , alfalfa ⁵	170 g/ac (420 g/ha)
Dry beans ⁵	227 to 312 g/ac (560 to 770 g/ha)
Potatoes	71 to 127 g/ac (175 to 315 g/ha)
Succulent beans ⁷ , succulent peas ⁷	170 to 312 g/ac (420 to 770 g/ha)
Sunflowers ⁶	142 to 259 g/ac (350 to 640 g/ha)

Water volume

Ground application	40 L/ac (10 gal/ac)
Aerial application	20 L/ac (5 gal/ac)

⁵ Ground, aerial and pivot or sprinkler irrigation.

⁶ Ground and aerial application only.

⁷ Ground application only.

Mixing order

1. Fill the spray tank 1/2 full of water and start agitation.
2. Add the required amount of Lance fungicide to the tank.
3. If tank mixing, add the required amount of the tank-mix partner.
4. Continue agitation while filling the remainder of the spray tank.
5. After use, clean the spray tank according to label precautions.

Application tips

Rainfastness – 2 hours.

Lance should be applied preventatively, prior to the onset of disease.

Avoid application when heavy rain is forecast.

Apply when conditions are favourable for disease development.

Grazing

Do not graze or feed treated alfalfa to livestock.

Pre-harvest interval

7 days after application for succulent beans and succulent peas.

21 days after application for dry beans, canola, chickpeas, lentils, mustard, field peas and sunflowers.

Tank mixes

Insecticides: Matador® 120 EC or Warrior®⁸

Fungicide: Headline®

Contact **AgSolutions** Customer Care or your local BASF Sales Representative for additional information on supported tank mixes.

⁸ For succulent beans only.

Always read and follow label directions.

AgSolutions, and **HEADLINE** are registered trade-marks of BASF Corporation; **LANCE** is a registered trade-mark of BASF SE; all used with permission by BASF Canada Inc. **HEADLINE**, and/or **LANCE** should be used in a preventative disease control program. © 2018 BASF Canada Inc.

MATADOR is a registered trade-mark of Syngenta Participations AG. **WARRIOR** is a registered trade-mark of Syngenta Crop Protection, LLC.