

Cotegra fungicide

technology sheet

A new era for white mold management to help preserve yield and quality.

- Combines the two leading active ingredients targeting white mold in canola, in a convenient liquid premix
- Provides best-in-class management of white mold in soybeans, canola and dry beans
- Designed to protect soybeans from white mold and other key foliar diseases, including frog eye leaf spot and septoria brown spot

Active ingredients

Boscalid – Group 7
Prothioconazole – Group 3

Formulation

Suspension concentrate

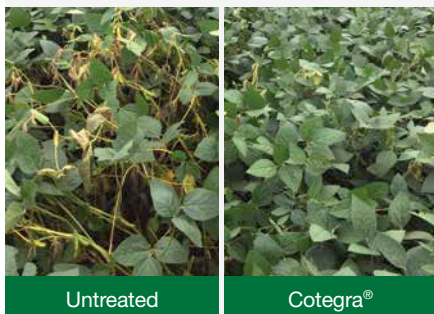
One case contains

2 x 9.8 L jugs

Storage

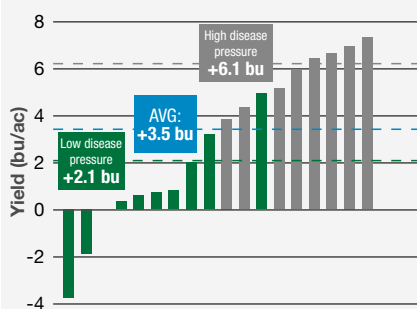
Store above 0°C.

Protection from key foliar diseases and white mold in soybean.



Source: BASF Ag Performance Trials, Ripley, ON, 2017

Soybean yield results with Cotegra fungicide under high and low disease pressure.



Source: BASF Ag Performance Trials, ON, 2017, n=20

Crops

Soybeans

Canola

Dry beans

Staging

Prior to disease development; flowering to early pod development (R1 to R3)

20% to 50% flowering

20% to 50% flowering

Note: A second application can be made 7 to 14 days after first application if disease persists, or weather conditions favour disease development. Use the shorter interval when disease pressure is high to obtain extended protection and maximum yield benefit.

Diseases controlled

In canola.

Sclerotinia stem rot (*Sclerotinia sclerotiorum*)¹

In dry beans.

White mold (*Sclerotinia sclerotiorum*)²

In soybeans.

Asian soybean rust (*Phakopsora pachyrhizi*)¹

Frog eye leaf spot (*Cercospora sojina*)¹

Septoria brown spot (*Septoria glycines*)²

White mold (*Sclerotinia sclerotiorum*)²

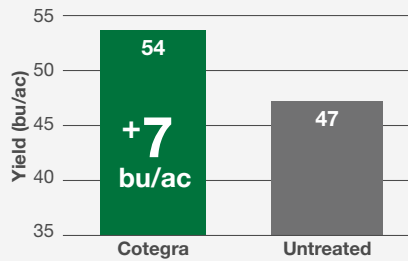
¹ Control.

² Suppression.

 **BASF**

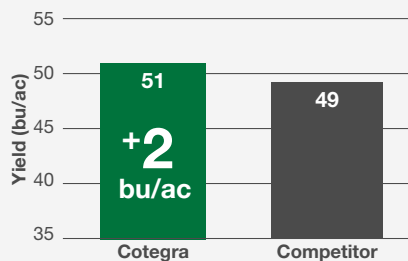
We create chemistry

Increased yield with Cotegra fungicide vs untreated on canola



Source: BASF Research Authorization trials, Western Canada, 2016, n=15

Increased yield with Cotegra fungicide vs competitor on canola



Source: BASF Research Authorization trials, Western Canada, 2016, n=27

Application rates

One case of Cotegra fungicide will treat 48 to 80 acres, depending on crop.

Soybeans	280 ml/ac (0.7 L/ha)
Dry beans	400 ml/ac (1.0 L/ha)
Canola	240 to 280 ml/ac (0.6 to 0.7 L/ha)

Water volume

Ground application ³	40 to 80 L/ac (10 to 20 gal/ac)
Aerial application ⁴	20 L/ac (5 gal/ac)

³ Higher water volumes recommended for optimal coverage.

⁴ Class 2 pesticides, such as Cotegra, require a permit to be applied by aerial application in Ontario. No permit is required for an application on ground.

Mixing order

1. Fill the cleaned spray tank 1/2 full of water and start agitation.
2. Add the required amount of Cotegra fungicide to the tank.
3. Continue agitation while filling the remainder of the spray tank.
4. After use, clean the spray tank according to label precautions.

Application tips

Rainfastness – Avoid applying when rain is forecasted within 3 hours of application.

Do not apply more than two applications of Cotegra per season.

Pre-harvest interval

21 days after application for soybeans and dry beans.

36 days after application for canola.

Tank mixes

None on label.

Contact BASF Ag Solutions Customer Care or your local BASF Sales Representative for additional information on supported tank mixes.

For more information: Call BASF Ag Solutions Customer Care at 1-877-371-BASF (2273), or visit agsolutions.ca.

Always read and follow label directions.

COTEGRA is a registered trade-mark of BASF SE; all used with permission by BASF Canada Inc. COTEGRA fungicide should be used in a preventative disease control program. © 2018 BASF Canada Inc.