

The only EBDC that contains 14.4% zinc. Superior fruit finish with excellent disease control

POLYRAM® DF fungicide is the EBDC of choice for Canadian apple growers. Those who want enhanced protection against the costly damage of apple scab and cedar apple rust as well as the added value zinc provides for their marketable fruit choose POLYRAM DF.

Zinc is a key element in photosynthesis that keeps plant foliage greener and healthier, therefore setting up apple trees better to defend themselves against economically important diseases. POLYRAM DF is safe on plant foliage and resistant to rain wash-off. It is also an excellent choice for IPM programs, as it is soft on important beneficials. The dry flowable formulation is extremely easy to handle and mix, and won't clog sprayer nozzles.



Diseases Controlled in Pome Fruit:

- Apple Scab
- Cedar Apple Rust
- Apple Quince Rust

Rates: 4.5 - 6.0 kg/ha

Directions: Apply 6.0kg/ha of POLYRAM DF in a regular protective schedule from green tip to and including second cover spray. If scab pressure is low after second cover spray, reduce rate to 4.5kg/ha. Do not apply later than 45 days before harvest.

For powdery mildew control, mix 3kg/ha of POLYRAM DF with 0.34kg/ha of NOVA® 40W fungicide. See label for complete application recommendations.



The ONLY fungicide with Surface-Systemic-Activity™

SOVRAN® fungicide provides excellent protective and kickback activity on apple scab, actually preventing spore germination and growth on the fruit and leaves - no tank mix required! SOVRAN also provides effective control of powdery mildew when used in your apple disease management program.

SOVRAN has a high affinity for the waxy cuticle of plant tissue; a property that ensures SOVRAN gets in and stays in under heavy disease pressure. It is also the only scab fungicide that has *Surface-Systemic-Activity™*, enhancing its ability to cover the surfaces of leaves AND adhering to fruit surfaces, protecting your marketable apples and pears season long. You can count on 7-10 days preventative control in average growth conditions, and 96 hours of kickback activity if needed.

Diseases Controlled in Pome Fruit:

- Apple and Pear Scab
- Powdery Mildew

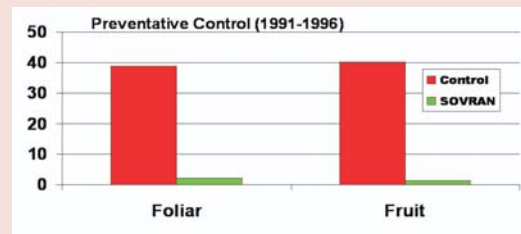
Rates:

240g/ha (preventative and curative activity under moderate disease conditions, up to 96 hours kickback activity)
360g/ha (use as a curative treatment only under extreme disease pressure)

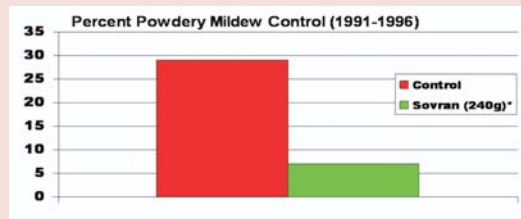
Directions:

The ideal timing for a SOVRAN application is through the pre-bloom and post-bloom periods when new fruit is developing.

Apple Scab Control



Powdery Mildew Control



Source: BASF, Average of 21 trials / Source: BASF, Average to 8 trials

An outstanding formulation of sulphur for pome & stone fruit

KUMULUS® is a dry flowable sulphur fungicide that provides growers with economical control for many key diseases in pome and stone fruit, as well as control for various species of mites. Its patented formulation ensures low dust, easy to mix product that helps to minimize the risk of scorching.

Activity on the plant surface

When KUMULUS DF is suspended in water, the resulting mixture will contain several different particle sizes. Once applied to the plant surface, the smallest particles of KUMULUS DF are available for rapid activity. The sulphur works immediately through contact and vapour action to protect against target fungi. KUMULUS particles in the mid-size range provide a sustained release of active sulphur, while larger particles act as a long-term residual source.



KUMULUS Application Information:

Pests Controlled in Apples:

- Powdery mildew
- Apple scab
- Rust mites

Pests Controlled in Peaches:

- Brown rot
- Leaf spot
- Scab
- Powdery mildew

Pests Controlled in Plums:

- Brown rot
- Leaf spot

Pests Controlled in Sour Cherries:

- Brown rot
- Powdery mildew
- Rust mites

Pests Controlled in Sweet Cherries:

- Brown rot

Rates: 200-750g/100L water, see label for specific application recommendations



More diseases. More control. And now more crops.

PRISTINE® WG fungicide helps Pome and Stone Fruit growers reach their quality and yield goals by defending their crop against most of the key diseases. PRISTINE is a valuable tool for producing fruit with the superb quality that buyers demand. PRISTINE combines two exceptional active ingredients to give growers:

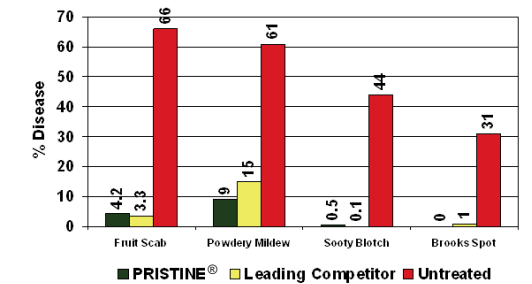
- Two different modes of action (boscalid and pyraclostrobin) for broad-spectrum, sustainable control while helping delay the risk of resistance
- Locally systemic and Translaminar activity to improve rainfastness and prevent wash-off for consistent control even under adverse weather

Diseases Controlled in Tree Fruit:

- POME FRUIT: Apple and Pear Scab, Powdery Mildew, Fly Speck, Sooty Blotch, Brooks Spot
- STONE FRUIT: Anthracnose, Blossom Blight, Brown Rot, Leaf Spot, Rhizopus, Powdery Mildew (Suppression only)

Application Tips:

Begin application prior to the onset of disease. Apply on a 7 to 10 day schedule. Use short interval when disease risk is high or when growth is very rapid. Do not apply more than two (2) sequential applications before alternating to a fungicide with different modes of action other than Group 7 and Group 11; do not apply more than 3 applications per season. May be applied up to 0 days pre-harvest for Stone Fruit, or 5 days for Pome Fruit. See label for re-entry times that range from once residues have dried up to 12 days, depending on the nature of the work and crop.



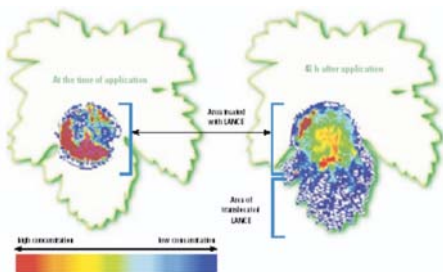
*Standards were SOVRAN (Fruit Scab, Powdery Mildew), Flint (Sooty Blotch), Caplan + Mianozab (Brooks Spot). Source: BASF and University trials.



LANCE

Pushing the Limits of Higher Quality and Yields

LANCE® works to protect the plant against disease before damage occurs. By defending your stone fruit crop against THE key disease, **Brown rot**, LANCE fungicide helps you maximize your marketable yield. Its unique mode of action lets it move through plant tissue, fortifying the crop against the onslaught of disease, ultimately enhancing yield and quality. The active ingredient in LANCE is boscalid, which is registered on over 70 crops in Canada and around the world. *Unleash the potential of your high value stone fruit crop with LANCE fungicide.*



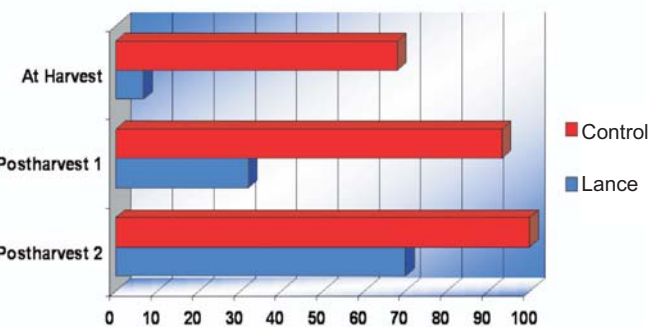
Diseases Controlled in Stone Fruit:

- Brown Rot
- Monilinia blossom blight

Rates: 370g/ha

Directions: Begin applications at pink bud or prior to disease development and continue on a 7 to 14 day interval. Use the high rate and shorter interval under heavy disease pressure.

Lance control of Brown Rot on Peaches - % Disease



2 applications (0.15 kg/A) starting at the beginning of fruit colour and 7 days later. Fruit was inoculated prior to harvest. Ratings were performed 5, 7, and 12 days after harvest - NCSU Raleigh (2000)

Polyram® DF



Kumulus® DF



For more information about the BASF family of tree fruit products, call **ENGAGE AGRO** at 1-866-613-3336 or visit the BASF website at www.agsolutions.ca.

Always refer to product labels for complete application and handling instructions.

POLYRAM & KUMULUS are registered trademarks of BASF AG, used under license by BASF Canada Inc. LANCE is a registered trademark of BASF, used under license by BASF Canada Inc. PRISTINE is a registered trade-mark of BASF SE, used with permission by BASF Canada Inc. CABRIO is a trademark & SOVRAN is a registered trademark of BASFCorporation, used under license by BASF Canada Inc. POAST is a registered trademark of BASF AG, used under license by BASF Canada Inc. Nova™ is a registered trademark of Dow Agrosciences LLC. All other products are trademarks or registered trademarks of their respective companies.

Copyright 2010 BASF Corporation.



Protection Products

SOVRAN APOGEE POLYRAM
 KUMULUS PRISTINE CABRIO
 LANCE SOVRAN APOGEE
 POLYRAM KUMULUS CABRIO
 PRISTINE LANCE
 SOVRAN APOGEE POLYRAM
 KUMULUS PRISTINE CABRIO
 LANCE SOVRAN APOGEE
 POLYRAM KUMULUS CABRIO
 PRISTINE CABRIO LANCE
 SOVRAN APOGEE POLYRAM
 KUMULUS PRISTINE CABRIO
 LANCE SOVRAN APOGEE

BASF provides your complete Tree Fruit Protection Package



CABRIO

Dual-Sided Protection, delivering outstanding disease control in stone fruits.

CABRIO™ EG is a fast-acting fungicide with a high level of activity on a broad-spectrum of major diseases that threaten yield and quality. The revolutionary mode of action in CABRIO fungicide is registered for use on more than 90 crops worldwide to control over 50 diseases, including those that threaten stone fruit yield and quality.

CABRIO EG fungicide is a site-specific strobilurin (Group 11) fungicide that stops spores as they germinate, preventing them from infecting plant tissue. By interfering with cell respiration and the production of energy, CABRIO EG also causes sensitive fungi to stop growing and die. When product is applied to the leaf it moves rapidly through the leaf to provide "Dual-sided™" protection against further spread of the disease. CABRIO EG is bound tightly in the waxy layer of the leaf and is extremely rainfast shortly after application.



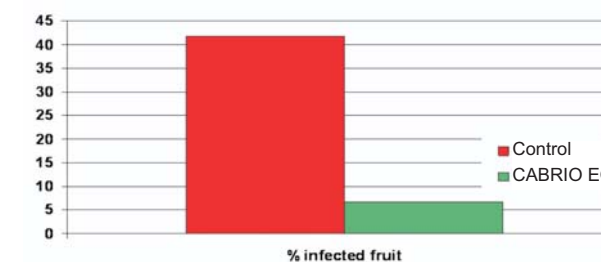
Diseases Controlled in Stone Fruit:

- Anthracnose (*Colletotrichum spp.*)
- Powdery Mildew (all cherries)
- Suppression of Monilinia blossom and twig blight

Rates: 0.67 kg/ha

Directions: Begin applications at pink bud or prior to disease development. Apply CABRIO at 7-14 day intervals. Use the shorter interval when disease pressure is high. Do not make more than 2 sequential applications of CABRIO before alternating to a different mode of action.

Powdery Mildew control in Stonefruit



BASF, Applied 4/15, 5/8, 5/27/98 @ 107 gpa. Evaluated 6/4/98.