



We create chemistry

2016 Crop Protection Guide



Chemistry that's as innovative as you are.

At BASF Canada, we pride ourselves in bringing growers the most innovative and helpful crop solutions on the market. Recently introduced examples include:

- Nodulator[®] PRO inoculant – for all the benefits of HiStick[®] PRO preinoculant, now called Nodulator PRO
- Armezon[®] PRO¹ herbicide – provides multiple modes of action for rapid, post-emergent weed control with long-lasting residual activity in corn

¹The registration process for Armezon PRO has not been completed. This update is for research purposes only.

Rewards that yield as much as your crops do.

Our **AgSolutions**[®] Rewards Program has been designed to benefit you at every stage of crop production. From pre-plant to pre-harvest, the BASF portfolio offers innovative solutions to maximize both your yield and rewards.

Learn more by visiting agsolutions.ca, contacting your BASF Sales Representative or BASF retailer, or by calling **AgSolutions** Customer Care at 1-877-371-BASF (2273).

AgSolutions[®]
REWARDS

AgCelence – Unique. Proven. Exceptional.

Growers count on fungicides to help protect developing crops and prevent lost yield potential due to disease. Extensive research and years of grower experience have proven that a unique active ingredient available only in select BASF fungicides can do more than protect against disease.

BASF fungicides that contain the active ingredient pyraclostrobin offer added benefits for your crops in addition to disease control. We call these benefits¹ **AgCelence**® and you see them in your crops when you use:

- Priaxor® or Headline® fungicide in corn and soybeans
- Twinline® fungicide in cereals
- Cabrio® Plus fungicide in potatoes

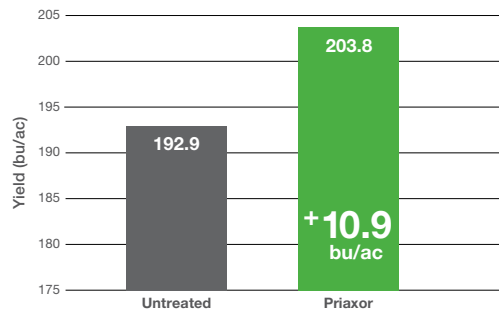
How do crops benefit from AgCelence?

- Protection against all major leaf diseases for healthier plants²
- Increased growth efficiency with more effective capture and utilization of energy from the sun²
- Increased ability for the plant to utilize the nitrogen provided for growth²
- Better management of exposure to short periods of minor stress, allowing plants to remain productive for longer²

Increase your crop's potential for higher yields with **AgCelence**.

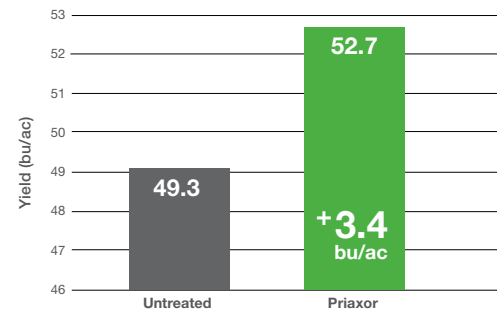
Plants treated with **AgCelence**-branded fungicides are proven to be more productive, ultimately leading to increased yield potential² at harvest.

In Corn



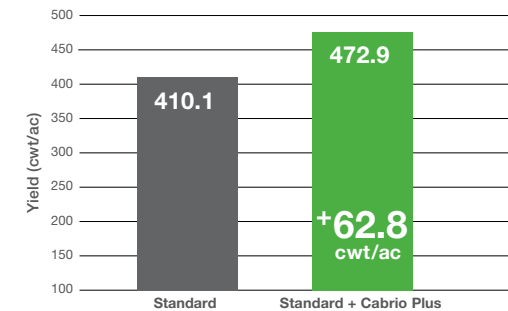
Source: **AgSolutions**® Performance Trials, ON & QC, 2014, n=63

In Soybeans



Source: **AgSolutions** Performance Trials, ON & QC, 2014, n=55

In Potatoes



Source: Canadian field-scale performance trials, 2005–2014, n=124

¹ **AgCelence** benefits refer to products that contain the active ingredient pyraclostrobin. ² All comparisons are to untreated, unless otherwise stated.

The science behind AgCelence.

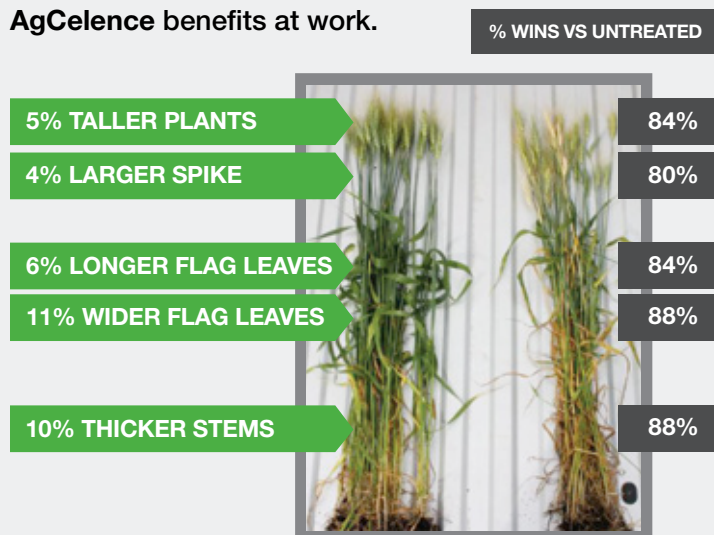
Increased growth efficiency.

Years of BASF research, third-party studies and grower-conducted trials have shown that plants treated with the active ingredient pyraclostrobin are more effective at conducting photosynthesis and respiration, leading to more sugar available for growth and yield. Research has also shown that plants respond to pyraclostrobin by producing more of the enzyme responsible for converting nitrogen into a usable form. The increase in available sugar and nitrogen results in larger, greener plants, with more biomass and area for photosynthesis.

Better stress management.

Stressed plants produce ethylene, the stress hormone that signals the plant to stop growth and set seed. In research studies, plants treated with pyraclostrobin produced less ethylene in response to exposure to cold, heat and drought stresses. This allows treated plants to continue growing in the presence of these stresses, leading to plants that remain viable and productive for longer, with increased yield potential.

AgCelence benefits at work.

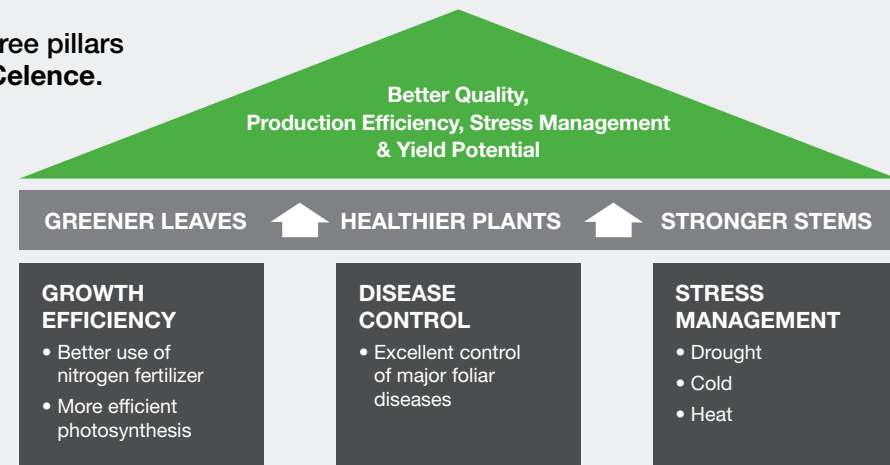


Twinline fungicide sprayed at flag-leaf vs. untreated.

Source: **AgSolutions** Performance Trials, 2013, n=25

Each trial assessed 50 plants and compared 40+ acres of Twinline to 40+ acres of untreated on same field and variety.

The three pillars of AgCelence.



Expect more with AgCelence.

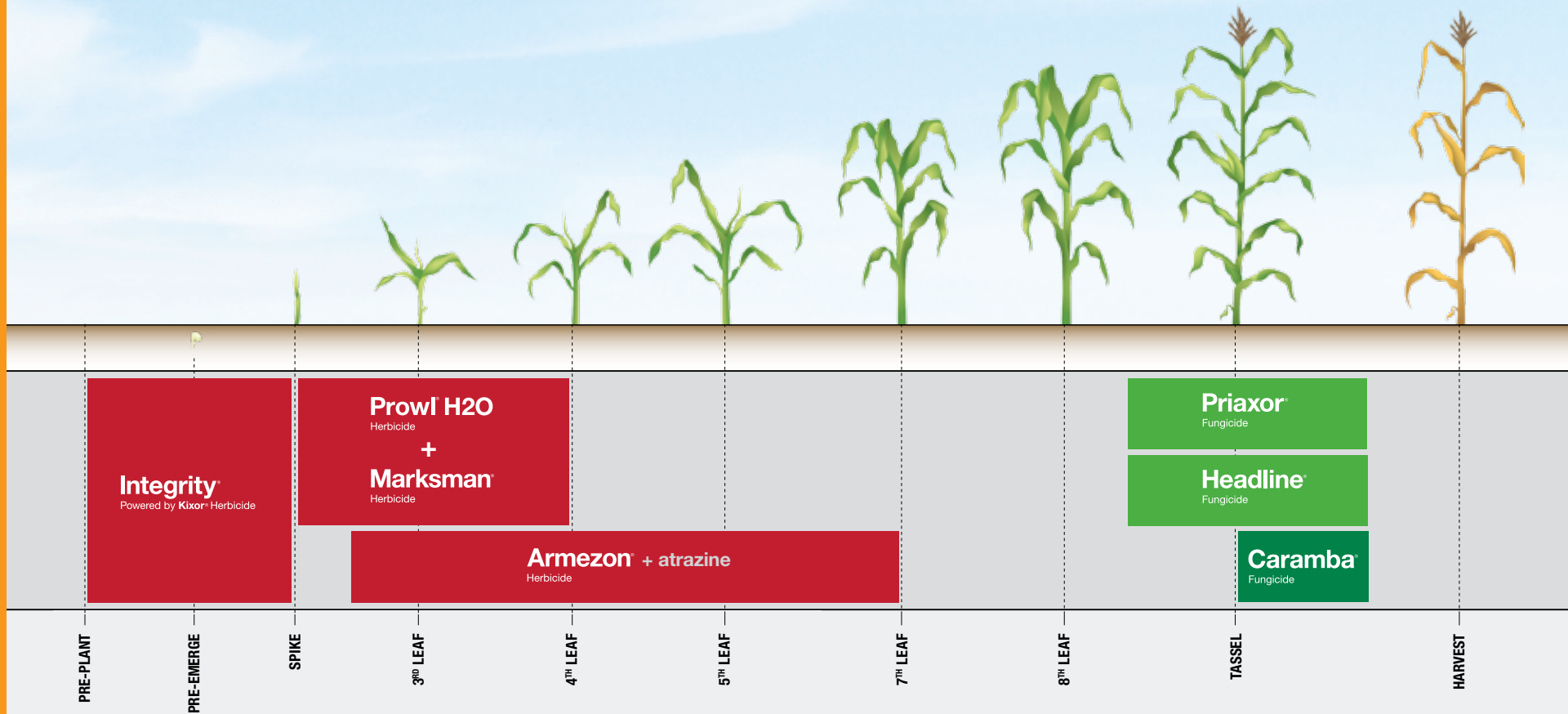
Taken all together, these effects of pyraclostrobin on plants have been proven to result in increased yield potential, over and above what can be expected from disease control alone. **AgCelence**-branded fungicides give your crop more than excellent protection against disease. They help you build yield potential to make your crop the most productive possible.





Elevate your corn.

SOLUTIONS FOR GLYPHOSATE-TOLERANT CORN



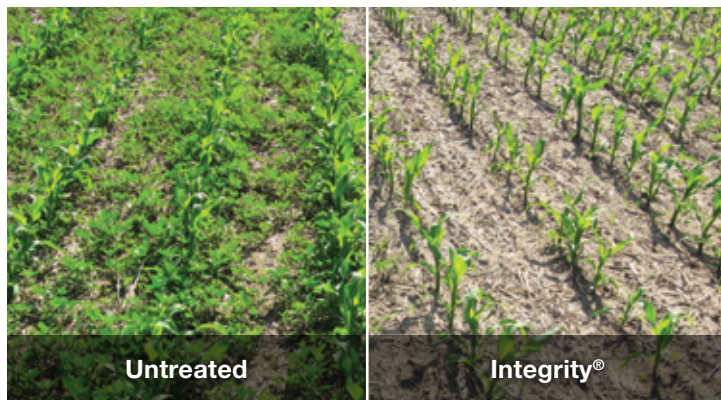
Staging graphics depicted here are for quick reference only. Refer to individual product pages and product labels for detailed staging information.

Integrity®

Powered by **Kixor®** Herbicide

Broad-spectrum weed control to give corn a weed-free start.

- Group 14 and 15 chemistry for multiple-mode-of-action control of velvetleaf, yellow nutsedge¹ and weeds resistant to glyphosate, triazine and Group 2 herbicides
- Application flexibility including pre-emergence, pre-plant incorporated or pre-plant surface, all with great follow-crop flexibility



Source: BASF grower-applied Integrity field trial, Caledonia, ON, 2009

USE RATE	APPLICATION TIMING
40 acres/case, 0.45 L/ac ² Also available in bulk: 450 L Tote (1,000 acres/case)	Apply pre-plant surface or pre-plant incorporated.
40 to 60 acres/case, 0.3 to 0.45 L/ac ³ Also available in bulk: 450 L Tote (1,000 acres/case)	Apply pre-emergent. ³

¹ Pre-plant incorporated only.

² Corn full rate: Use full rate, tank-mixed with glyphosate for early pre-plant. Use full rate of Integrity herbicide alone for pre-plant incorporated applications.

³ Set-up rate (0.3 L/ac): This reduced rate should be used pre-emergence, when an in-crop application of glyphosate is planned for glyphosate-tolerant corn. See label for weeds controlled.

Prowl® H2O

Herbicide



Marksman®

Herbicide

Reliable one-pass weed control.

- Ideal for resistance management
- Excellent one-pass early post-emergent control of grasses and broadleaf weeds, including perennials
- Exceptional residual control of annual grasses and key broadleaf weeds



Prowl® H2O + Marksman® + glyphosate

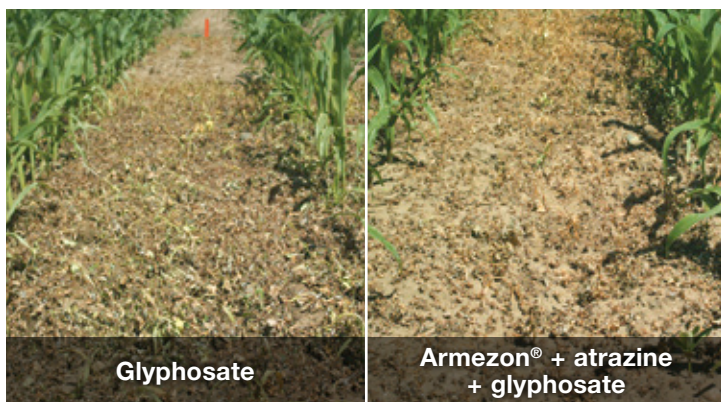
USE RATE	APPLICATION TIMING
Prowl H2O 0.89 L/ac + Marksman 1 L/ac + glyphosate	Apply spike to 4 leaf stage.

Armezon®

Herbicide

Your ideal tank-mix partner for post-emergent weed control in corn.

- Registered for use in field, seed, and sweet corn
- Post-emergent herbicide quickly absorbed by leaves, roots and shoots for fast control of annual broadleaf weeds and grasses
- Innovative Group 27 chemistry for control of Group 2-resistant, glyphosate-resistant and triazine-resistant weeds



Source: BASF research trial, Maryhill, ON, 2013

USE RATE	APPLICATION TIMING
160 acres/case Armezon 15 mL/ac + atrazine ¹ 0.42 L/ac	Apply at 1 to 7 leaf stage.

¹ Atrazine is sold separately.

Armezon® PRO

Herbicide

RESEARCH PRODUCT

Research shows rapid, post-emergent weed control with residual activity.

- Fast-acting, broad-spectrum control of broadleaf weeds and grasses, with long-lasting residual activity up until canopy closure
- By combining Group 27 and Group 15 chemistries, Armezon PRO offers multiple modes of action and is tank mixed with atrazine and/or glyphosate
- Wide window of application between the spike and 8-leaf stage

The registration process for Armezon PRO has not been completed. This update is for research purposes only.



Source: BASF research trial, Maryhill, ON, 2015

Priaxor®

Fungicide

A more advanced fungicide that helps maximize your corn yield potential.¹

- Contains Xemium®, the active ingredient with unique mobility characteristics that provides more consistent and continuous disease control
- With the proven benefits² of **AgCelence®** that delivers control of key diseases, increased growth efficiency and better management of minor stress to maximize yield potential¹
- Multiple modes of action for increased performance and reduced risk for the onset of fungicide resistance



Source: **AgSolutions®** Performance Trials, Stayner, ON, 2013

USE RATE ³	APPLICATION TIMING
160 acres/case 0.12 L/ac	Apply at early to full tassel (VT) ⁴ or prior to disease development.

¹ All comparisons are to untreated, unless otherwise stated.

² **AgCelence** benefits refer to products that contain the active ingredient pyraclostrobin.

³ Priaxor fungicide is registered for ground application in corn only.

⁴ While Priaxor can be applied at earlier growth stages, research suggests that the optimal timing for corn is at the VT stage for **AgCelence** benefits including disease control.

Headline®

Fungicide

Protects and builds yield potential through the benefits¹ of **AgCelence**.

- Provides the flexibility of using ground or aerial applications in corn
- Protection against key foliar diseases
- Enhanced growth efficiency for greener leaves and stronger stems, which improves standability, and increases harvest efficiency²
- Better management of minor plant stressors, including heat, drought and cold conditions



Source: BASF grower-applied trials, 2007

USE RATE	APPLICATION TIMING
80 acres/case 0.16 L/ac	Apply at early to full tassel (VT) ³ stage.

¹ **AgCelence** benefits refer to products that contain the active ingredient pyraclostrobin.

² All comparisons are to untreated, unless otherwise stated.

³ While Headline fungicide can be applied at earlier growth stages, research suggests that the optimal timing for corn is at VT stage for **AgCelence** benefits.

Caramba®

Fungicide

Preventative protection against fusarium and gibberella ear rots.

- Proven suppression of ear rots caused by *Fusarium graminearum* and *Gibberella zeae*
- Reduces deoxynivalenol (DON) contamination to preserve grade quality

USE RATE	APPLICATION TIMING
40 acres/case 0.405 L/ac	Apply at full silking to silk browning. ¹

¹ This is BBCH stage GS 63-67.



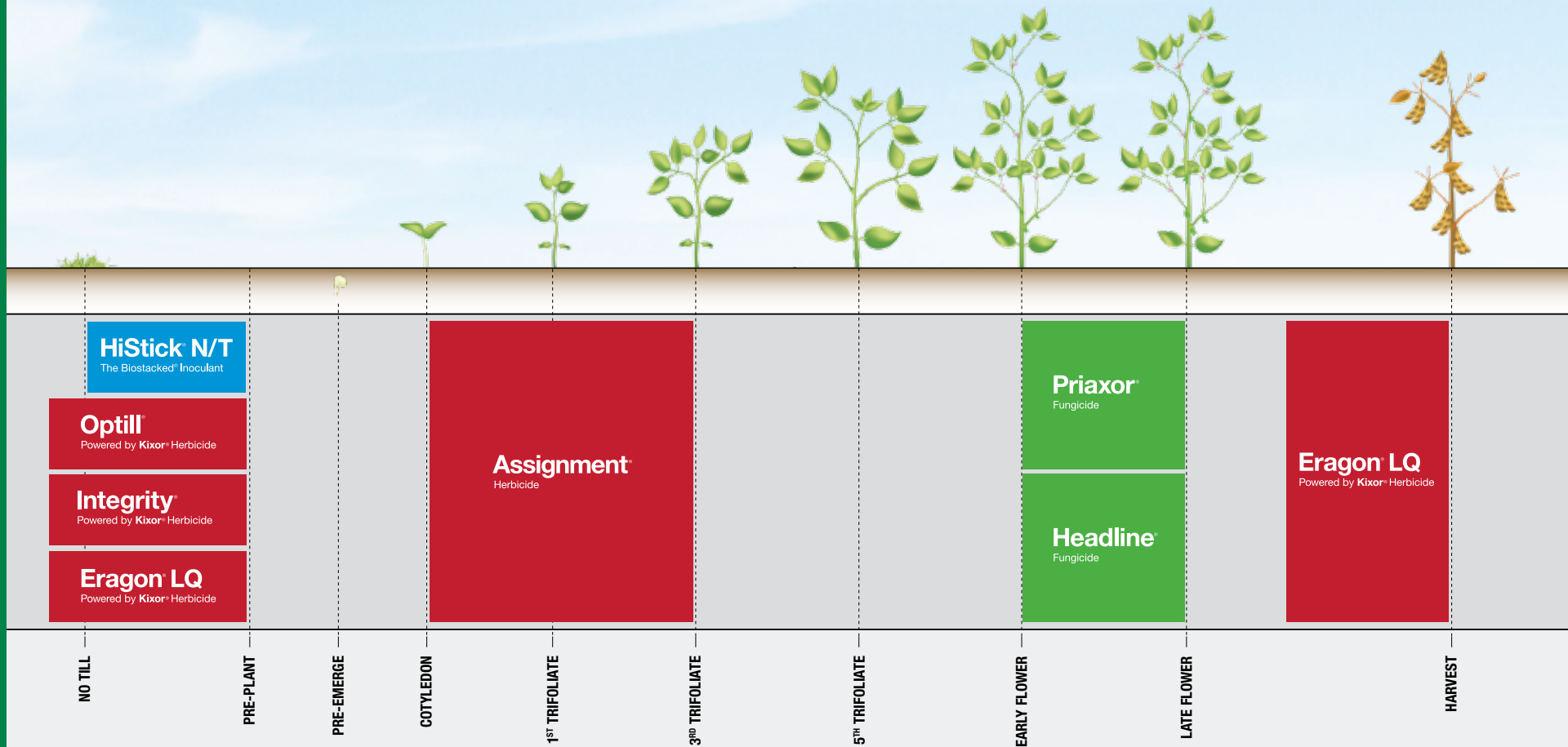
Notes:



Take your glyphosate-tolerant system to a whole new level.

Glyphosate-Tolerant
SOYBEANS

SOLUTIONS FOR GLYPHOSATE-TOLERANT SOYBEANS



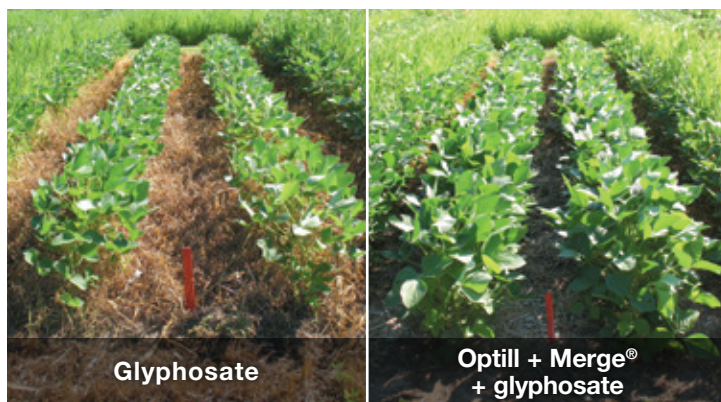
Staging graphics depicted here are for quick reference only. Refer to individual product pages and product labels for detailed staging information.

Optill®

Powered by **Kixor®** Herbicide

Rapid burndown with residual control for cleaner fields in glyphosate-tolerant soybeans.

- Powered by Kixor® for rapid burndown plus early season residual control in no-till and vertical-till productions
- Multiple modes of action to help manage resistant weeds
- Controls grass and broadleaf weeds during the early stages of crop development



Source: BASF research trials, Ridgetown, ON, 2012

USE RATE	APPLICATION TIMING
120 acres/case 60 g/ac + Merge ² 0.40 L/ac + glyphosate ²	Apply pre-plant. ¹

¹ In no-till or vertical tillage operations.

² Glyphosate and Merge adjuvant are not included in the case.

Integrity®

Powered by **Kixor®** Herbicide

Broad-spectrum weed control to give soybeans a weed-free start.

- Early season control of key broadleaf weeds such as Canada fleabane, with suppression of key grasses
- Combines Group 14 and Group 15 chemistries for multiple modes of action and control of weeds resistant to glyphosate, triazine and Group 2 herbicides
- Excellent follow-crop flexibility



Source: BASF research trial, Ridgetown, ON, 2014

USE RATE	APPLICATION TIMING
120 acres/case 0.15 L/ac + Merge ¹ 1.0 L/ac + glyphosate ¹	Apply pre-plant surface. ²

¹ Glyphosate and Merge adjuvant are not included in the case.

² Do not incorporate Integrity herbicide or apply after planting as injury may result.

Eragon® LQ

Powered by **Kixor®** Herbicide

PRE-PLANT

The ultimate burndown in an easy-to-use liquid formulation.

- Very rainfast and quickly absorbed for fast control of key broadleaf weeds
- Group 14 chemistry controls weeds resistant to glyphosate, triazine and Group 2 herbicides
- Complements and improves your pre-plant glyphosate application



Source: BASF research trials, Bryanston, ON, 2013

USE RATE	APPLICATION TIMING
160 acres/case 30 mL/ac ¹ + Merge ^{®2} 0.4 L/ac + glyphosate ²	Apply pre-plant.

¹ Do not use rates higher than 30 mL/ac (73 mL/ha) or crop injury may result. Use with glyphosate for pre-plant application only.

² Glyphosate (required for optimum activity) and Merge adjuvant (required) are not included in the case.

HiStick® N/T

The Biostacked® Inoculant

The highest on-seed count of beneficial biologicals.

- Biostacked® with two high performance bioactive ingredients
- Designed for ease of use in self-adhering (SA) peat and liquid formulations
- Greater root biomass and nodule mass, faster canopy closure and greater plant vigour



Source: BASF trials, 2007

FORMULATION	USE RATE	APPLICATION TIMING
SA Peat Liquid	200 x 50 lbs units of seed	Apply on seed.

Nodulator[®] PRO

The professional Biostacked[®] Inoculant system

Professionally applied for the same, proven benefits of HiStick[®] PRO preinoculant.

- Biostacked preinoculant system provides the nitrogen-fixing rhizobium of Nodulator[®] PRO plus the biofungicide¹ activity of Integral[®]
- Unique and exclusive package and bladder system provides up to 60 days of on-seed survivability
- Low application volume and preinoculant convenience



Source: University of Guelph trial, Stayner, ON, 2013

APPLICATION
Nodulator PRO is both applied by and available exclusively from bulk seed treaters.

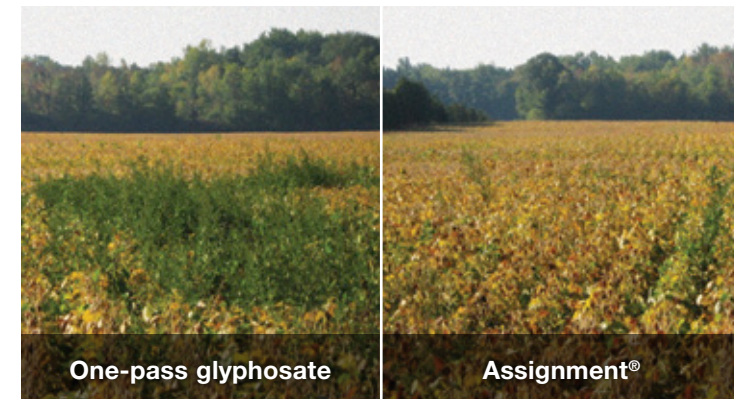
¹ The biological fungicide activity of Integral is a PMRA registered label claim in Canada.

Assignment[®]

Herbicide

One-pass residual weed control.

- Combines the power of Pursuit[®] and Roundup WeatherMAX[®] herbicides
- Post-emergent, residual control of velvetleaf, eastern black nightshade and redroot pigweed
- Protect your glyphosate-tolerant soybeans during the critical weed-free period



Source: Field-scale trial, Townsend, ON, 2007

USE RATE	APPLICATION TIMING
20 acres/case	Apply cotyledon to 3 rd trifoliate stage.

Priaxor®

Fungicide

A more advanced fungicide that helps maximize your soybean yield potential.¹

- Combines the active ingredient, Xemium®, with the proven benefits² of **AgCelence**®
- More consistent and continuous control of diseases including frog eye leaf spot and septoria brown spot, with suppression of sclerotinia stem rot³
- Multiple modes of action for increased performance and reduced risk for the onset of fungicide resistance



Source: Grower-applied trials, 2007



Source: **AgSolutions**® Performance Trials, ON, 2013

USE RATE	APPLICATION TIMING
160 acres/case or 107 acres/case 0.12 L/ac or 0.18 L/ac	Apply early to late flower (R2 to R3), or prior to disease development.

¹ All comparisons are to untreated, unless otherwise stated.

² **AgCelence** benefits refer to products that contain the active ingredient pyraclostrobin.

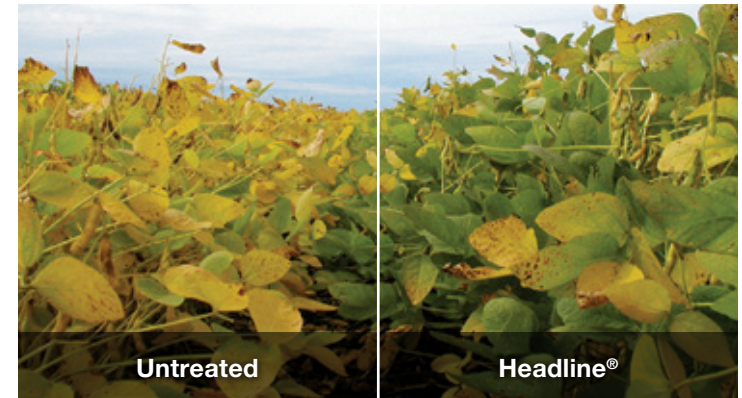
³ Apply Priaxor fungicide at the increased rate of 0.18 L/ac for suppression of sclerotinia stem rot.

Headline®

Fungicide

Protects and builds yield potential through the benefits¹ of **AgCelence**.

- Protection against key foliar diseases
- Increased growth efficiency for greener leaves and stronger stems, leading to larger and healthier crops with increased yield potential²
- Better management of exposure to minor stress, including heat, drought and cold conditions²



USE RATE	APPLICATION TIMING
80 acres/case 0.16 L/ac	Apply early to late flower (R2 to R3), or prior to disease development.

¹ **AgCelence** benefits refer to products that contain the active ingredient pyraclostrobin.

² All comparisons are to untreated, unless otherwise stated.

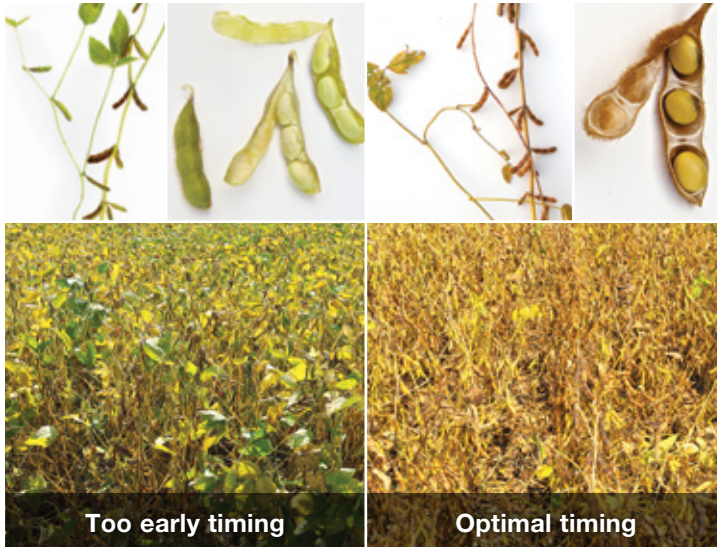
Eragon® LQ

Powered by **Kixor®** Herbicide

PRE-HARVEST

New, easy-to-use liquid formulation for complete crop and weed dry down in soybeans.

- Fast, complete crop dry down and reduced risk of regrowth
- Improved crop uniformity for easier harvestability
- When tank-mixed with glyphosate, will provide control of perennial weeds
- Correct timing is essential for pre-harvest applications. See our staging guide to ensure best results



USE RATE	APPLICATION TIMING
80 to 160 acres/case 29.5 to 59 mL/ac + Merge ^{®1} 0.4 L/ac + glyphosate ¹	Apply when 90% of the pods have changed colour, with the lower pods essentially being all brown and the upper pods being a yellowish-brown or grey in some varieties. At this point 80% of the leaves should have dropped with the remaining leaves being yellow.

¹ Glyphosate (required for optimum activity) and Merge adjuvant (required) are not included in the case.

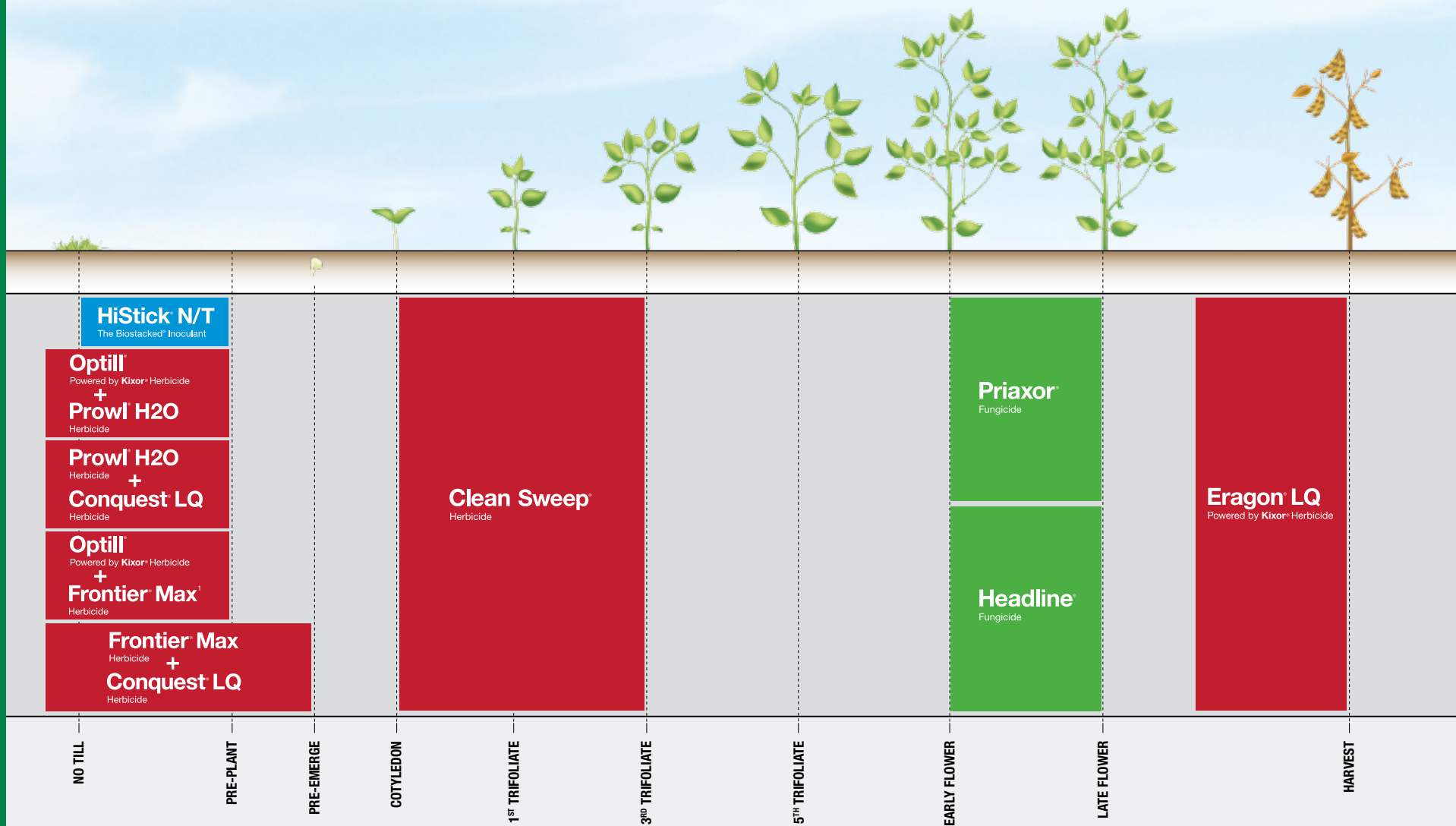
Notes:

Notes:



**Maximize the potential of your
conventional and IP soybeans.**

SOLUTIONS FOR CONVENTIONAL | IP SOYBEANS



Staging graphics depicted here are for quick reference only. Refer to individual product pages and product labels for detailed staging information.

¹Frontier[®] Max herbicide can be applied at pre-plant incorporated to pre-emergent.

HiStick® N/T

The Biostacked® Inoculant

The highest on-seed count of beneficial biologicals.

- Biostacked® with two high performance bioactive ingredients
- Designed for ease of use in self-adhering (SA) peat and liquid formulations
- Greater root biomass and nodule mass, faster canopy closure and greater plant vigour



Source: BASF trials, 2007

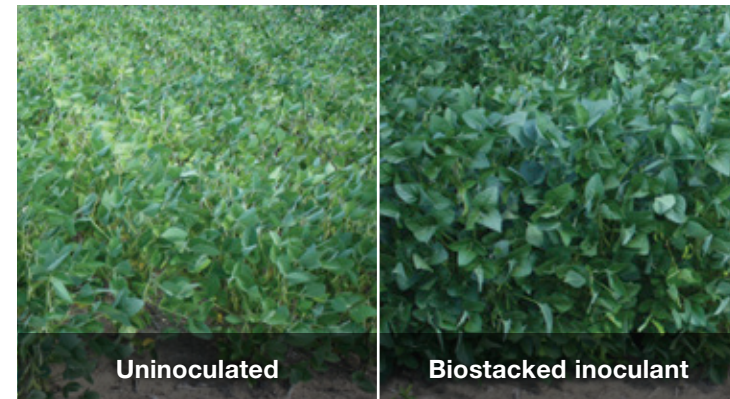
FORMULATION	USE RATE	APPLICATION TIMING
SA Peat Liquid	200 x 50 lbs units of seed	Apply on seed.

Nodulator® PRO

The professional Biostacked® Inoculant system

Professionally applied for the same proven benefits of HiStick® PRO preinoculant.

- Biostacked preinoculant system provides the nitrogen-fixing rhizobium of Nodulator® PRO plus the biofungicide¹ activity of Integral®
- Unique and exclusive package and bladder system provides up to 60 days of on-seed survivability
- Low application volume and preinoculant convenience



Source: University of Guelph trial, Stayner, ON, 2013

APPLICATION
Nodulator PRO is both applied by and available exclusively from bulk seed treaters.

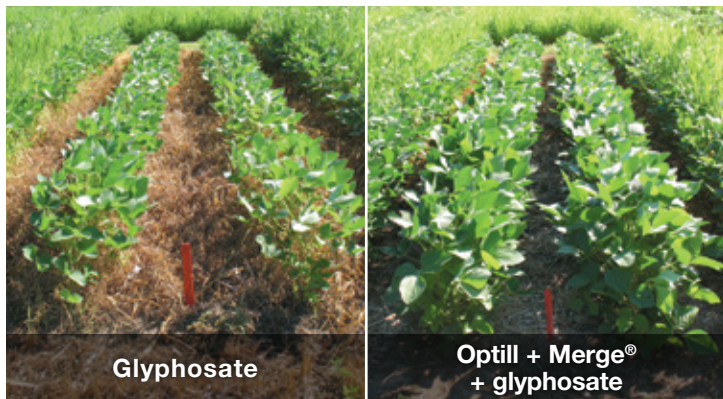
¹ The biological fungicide activity of Integral is a PMRA registered label claim in Canada.

Optill®

Powered by **Kixor®** Herbicide

Rapid burndown with residual control for cleaner fields in soybeans.

- Powered by Kixor® for rapid burndown plus early season residual control in no-till and minimum till production systems
- Multiple modes of action controls grasses, broadleaf weeds and their resistant biotypes during early stages of crop development
- Use with Prowl® H2O or Frontier® Max herbicide for control of grass weeds specific to your field



Source: BASF research trials, Ridgetown, ON, 2012

USE RATE	APPLICATION TIMING
120 acres/case 60 g/ac + Merge ¹ 0.40 L/ac + glyphosate ¹	Apply pre-plant. ²

¹ Glyphosate and Merge adjuvant are not included in the case.

² In no-till or vertical tillage operations.

Prowl® H2O

Herbicide

— **OR** —



Optill®

Powered by **Kixor®** Herbicide

Frontier® Max

Herbicide

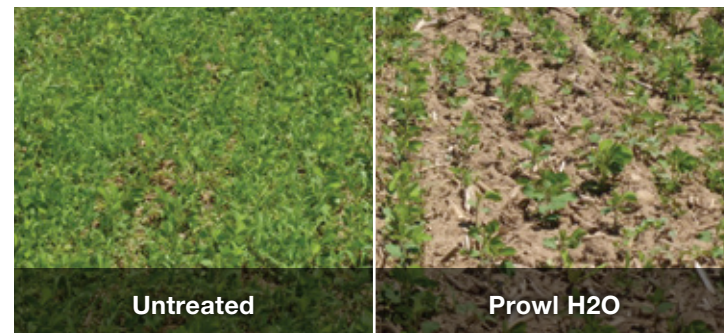
Choose the grass partner that's right for you.

Prowl H2O

- Strong residual activity on tough grasses even on lighter soil types
- Control of key grasses including fall panicum and green foxtail

Frontier Max

- Control of grasses, resistant biotypes and eastern black nightshade (including Group 2-resistant)
- Additional activity on nutsedge and redroot pigweed



Source: Research trial, Maryhill, ON, 2011

USE RATE	APPLICATION TIMING
Frontier Max 0.3 to 0.4 L/ac	Apply pre-plant incorporated to pre-emergent.
Prowl H2O 0.89 L/ac	Apply pre-plant surface or incorporated.

Prowl® H2O

Herbicide

— **OR** —

+ Conquest® LQ

Herbicide

Frontier® Max

Herbicide

Premium control of tough broadleaf weeds and annual grasses.

- Sustainable weed resistance management with multiple modes of action
- Rate flexibility for the most common specific weed pressures in soybeans
- Control of grasses and eastern black nightshade, including Group 2-resistant with the addition of Frontier Max herbicide



Source: AgSolutions® Performance Trial, 2011

USE RATE	APPLICATION TIMING
Conquest LQ 30 to 40 acres/case	Apply pre-plant surface or incorporated to pre-emergent.

Prowl® H2O

Herbicide

— **OR** —

Frontier® Max

Herbicide

FOLLOWED BY:

Clean Sweep®

Herbicide

Broad-spectrum weed control from a planned 2-pass program.

- Contact and residual activity on grasses and broadleaf weeds
- Group 2 and 6 chemistries for optimized resistance management
- Apply a BASF grass partner followed by Clean Sweep® herbicide for improved control of grasses and key broadleaf weeds



20 days after planting

Source: AgSolutions Performance Trial, 2011

USE RATE	APPLICATION TIMING
Clean Sweep 20 acres/case	Apply cotyledon to 3 rd trifoliolate stage.

Priaxor®

Fungicide

A more advanced fungicide that helps maximize your soybean yield potential.¹

- Combines the active ingredient, Xemium®, with the proven benefits² of **AgCelence**®
- More consistent and continuous control of diseases including frog eye leaf spot and septoria brown spot, with suppression of sclerotinia stem rot³
- Multiple modes of action for increased performance and reduced risk for the onset of fungicide resistance



Source: Grower-applied trials, 2007



Source: **AgSolutions**® Performance Trials, ON, 2013

USE RATE	APPLICATION TIMING
160 acres/case or 107 acres/case 0.12 L/ac or 0.18 L/ac	Apply early to late flower (R2 to R3), or prior to disease development.

¹ All comparisons are to untreated, unless otherwise stated.

² **AgCelence** benefits refer to products that contain the active ingredient pyraclostrobin.

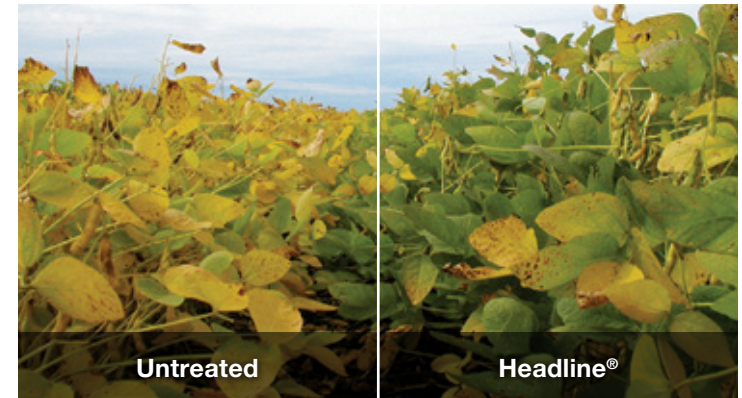
³ Apply Priaxor fungicide at the increased rate of 0.18 L/ac for suppression of sclerotinia stem rot.

Headline®

Fungicide

Protects and builds yield potential through the benefits¹ of **AgCelence**.

- Protection against key foliar diseases
- Increased growth efficiency for greener leaves and stronger stems, leading to larger and healthier crops with increased yield potential²
- Better management of exposure to minor stress, including heat, drought and cold conditions²



USE RATE	APPLICATION TIMING
80 acres/case 0.16 L/ac	Apply early to late flower (R2 to R3), or prior to disease development.

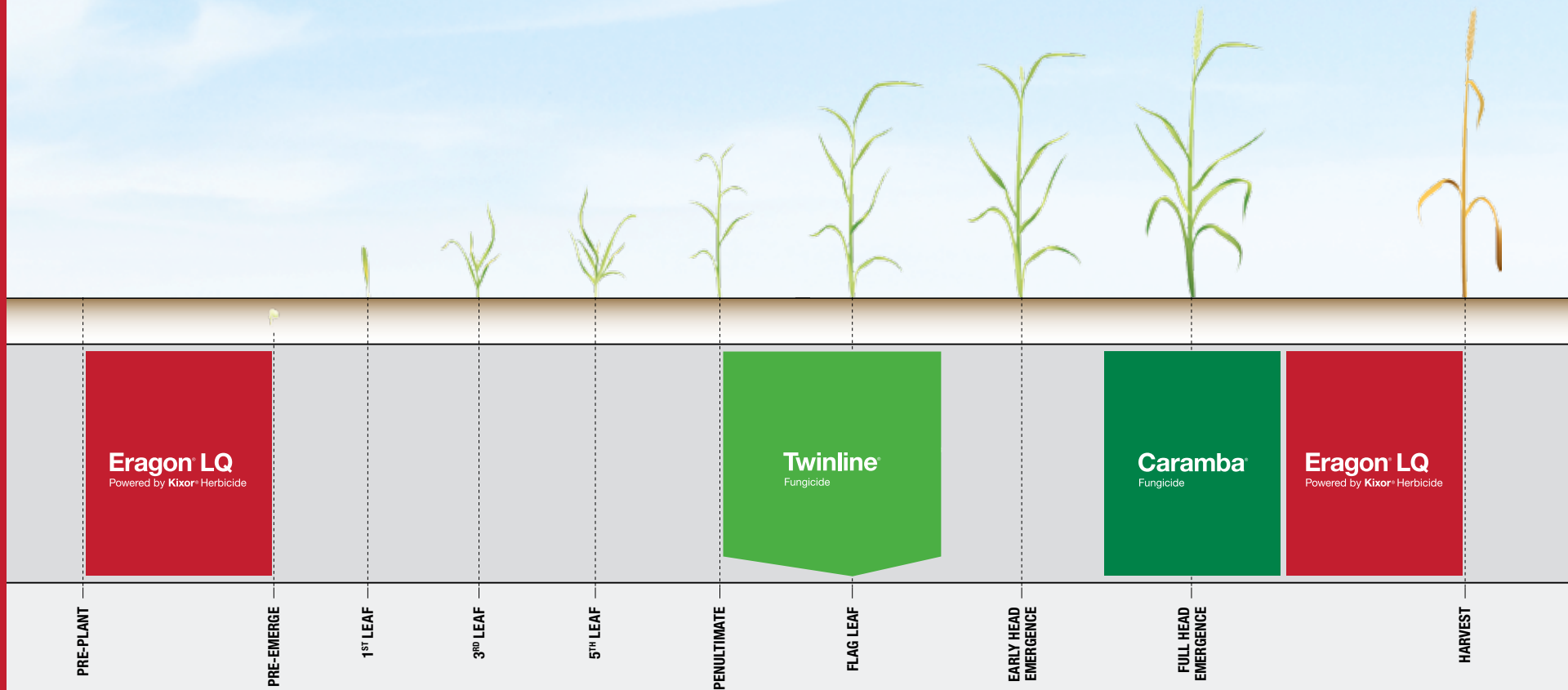
¹ **AgCelence** benefits refer to products that contain the active ingredient pyraclostrobin.

² All comparisons are to untreated, unless otherwise stated.

A man wearing a brown jacket and a baseball cap stands in a vast field of golden wheat under a blue sky with light clouds. He is looking down at a small amount of grain held in his open palms. The field stretches to the horizon, and a small tractor is visible in the distance on the right.

Taking cereals
to new heights.

SOLUTIONS FOR CEREALS



Staging graphics depicted here are for quick reference only. Refer to individual product pages and product labels for detailed staging information.

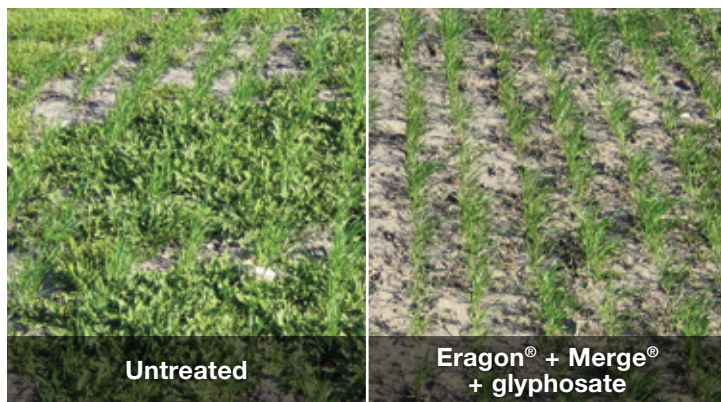
Eragon® LQ

Powered by **Kixor®** Herbicide

PRE-PLANT

The ultimate pre-emergent burndown in a new, easy-to-use liquid formulation.

- Faster, more consistent weed control
- Complements and improves your glyphosate application
- Use as a fall application for winter wheat or as a spring application for spring cereals
- A fall application in winter wheat allows you to optimize your Twinline® fungicide application for increased yield



USE RATE	APPLICATION TIMING
80 to 160 acres/case 29.5 to 59 mL/acre + Merge ¹ 0.4 L/ac + glyphosate ¹	Apply pre-plant to pre-emergent in wheat or spring cereals.

¹ Glyphosate (required for optimum activity) and Merge adjuvant (required) are not included in the case.

Twinline®

Fungicide

Broad-spectrum control of tough leaf diseases through the benefits¹ of **AgCelence** for cereals.

- Multiple modes of action for preventative control of major leaf diseases
- Protect and build yield potential with the benefits¹ of **AgCelence**®
- **AgCelence** benefits¹ include improved disease control, stronger stems for less lodging and greener, larger leaves for increased yield potential² when it counts most³



Source: BASF RCD trial, Edmonton, AB, 2011

USE RATE	APPLICATION TIMING ⁴
80 acres/case 0.202 L/acre	Apply at the flag-leaf stage or prior to the onset of disease.

¹ **AgCelence** benefits refer to products that contain the active ingredient pyraclostrobin.

² Research shows that up to 65% of a cereal crop's yield potential is determined at the flag-leaf stage.

³ All comparisons are to untreated, unless otherwise stated.

⁴ While Twinline can be applied at other stages (before the development of disease or at the early onset of disease symptoms) research suggests the flag-leaf timing provides optimal **AgCelence** benefits.

Caramba®

Fungicide

Preventative protection against late leaf diseases and fusarium head blight.

- Proven protection against fusarium head blight (FHB)
- Effective control of later-season foliar diseases
- Reduces deoxynivalenol (DON) contamination to preserve grade quality



Source: Bryanston trials, ON, 2008

USE RATE	APPLICATION TIMING
40 acres/case 0.405 L/acre	For fusarium head blight, apply at heading.

Eragon® LQ

Powered by **Kixor®** Herbicide

PRE-HARVEST

The ultimate pre-harvest weed dry down in barley, triticale and wheat.

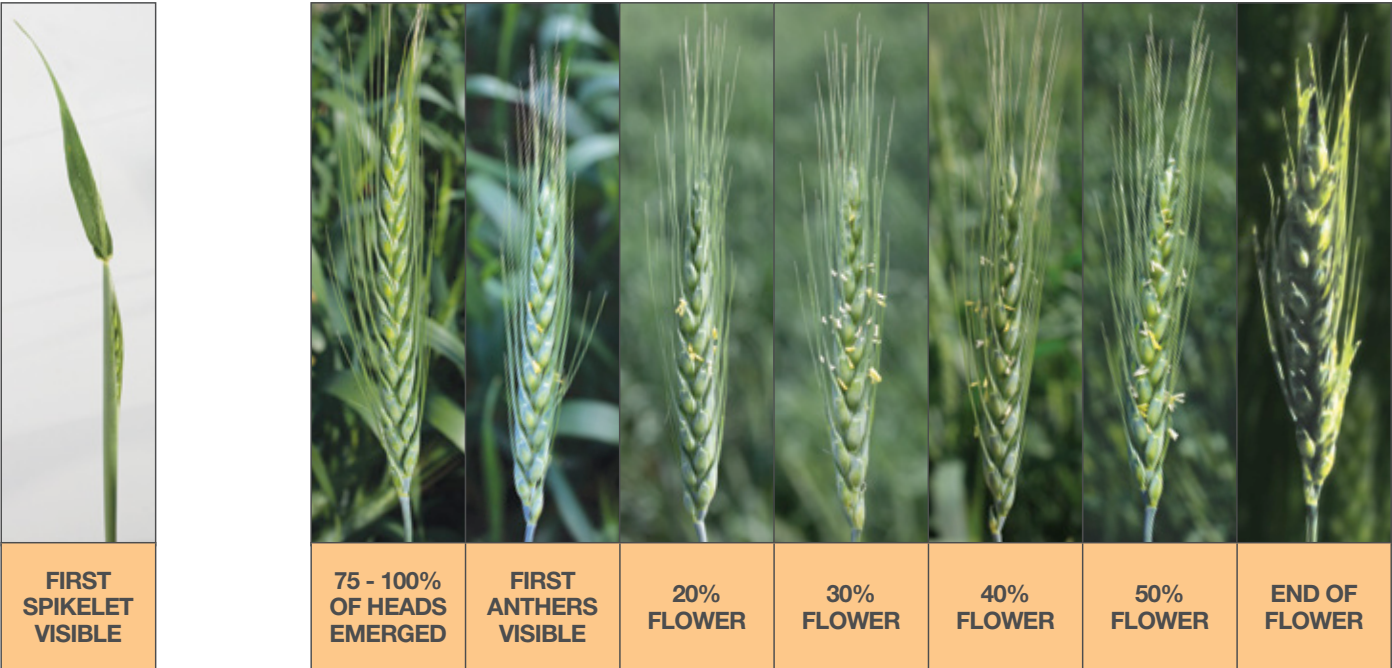
- Improved dry down of tough weeds, including volunteer canola (all types), common ragweed and Canada fleabane
- Quick weed dry down helps facilitate direct and more efficient harvesting
- Provides multiple modes of action, when tank-mixed with glyphosate, to manage weeds resistant to glyphosate, triazine and Group 2 herbicides



USE RATE	APPLICATION TIMING
80 to 160 acres/case 30 to 59 mL/ac + Merge ¹ 0.4 L/ac + glyphosate ¹	Apply at hard dough stage. The kernel should be firm and when pressed with a thumbnail, the impression is held. Kernel moisture content is approximately 30%.

¹ Glyphosate and Merge adjuvant (required) are not included in the case.

Optimal application timing for fusarium head blight (FHB).



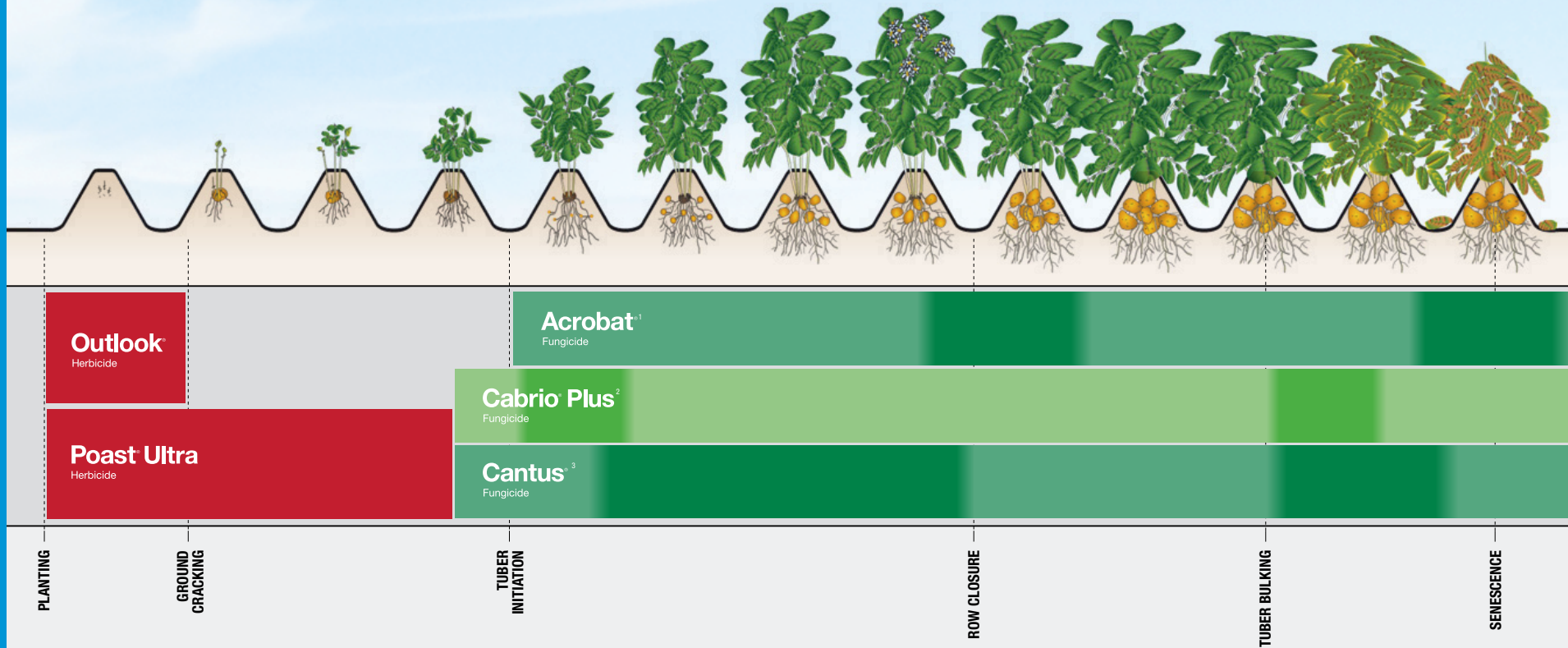
FIRST SPIKELET VISIBLE												
75 - 100% OF HEADS EMERGED												
FIRST ANTHEAS VISIBLE												
20% FLOWER												
30% FLOWER												
40% FLOWER												
50% FLOWER												
END OF FLOWER												
DAYS	-4	-3	-2	-1	0	+1	+2	+3	+4	+5	+6	+7
BBCH		51			59	61	62	63	64	65	69	
						SPRAY TIME FOR BEST RESULTS						
					APPLICATION WINDOW							
FHB RISK MONITORING					PLAN TO SPRAY				FHB INFECTION WINDOW			
<p>Monitor for FHB risk factors including warm, wet conditions and uneven crop uniformity. Consider history of fusarium in field.</p> <p>Source: agriculture.gov.sk.ca</p>					<p>Scout to determine when heads have fully emerged.</p>				<p>Precipitation or high humidity for at least 12 hours is required for spore germination and infection. Temperatures favouring infection range from 16 to 30°C, with the optimum range for <i>Fusarium graminearum</i> being 25 to 28°C.</p> <p>Source: agriculture.gov.sk.ca</p>			


Notes:

A close-up photograph of a person's hands holding several potatoes. One potato is cut in half, revealing its pale yellow interior. The person is wearing a brown jacket and grey pants. The background is a blurred green field under a bright sky.

Protect your potatoes.

SOLUTIONS FOR POTATOES



 Darker areas reflect recommended application periods for Cabrio[®] Plus fungicide.

 Darker areas reflect recommended application periods for Acrobat[®] and Cantus[®] fungicides.

¹ To reduce the risk of the development of fungicide resistance, tank mix Acrobat fungicide with other fungicides. Do not apply more than 4 applications per season.

² Do not apply more than 3 applications per year.

³ Do not apply more than 5 applications per season.

Staging graphics depicted here are for quick reference only. Refer to individual product pages and product labels for detailed staging information.

Outlook®

Herbicide

Protect potato yields through the critical weed free period.

- Pre-emergent control of annual grasses and key broadleaf weeds, including biotypes resistant to triazine and Group 2 herbicides
- Consistent performance in challenging weather conditions
- Residual activity and wider lateral control for reduced weed pressure throughout crop development



Source: BASF Canada, PEI, 2012

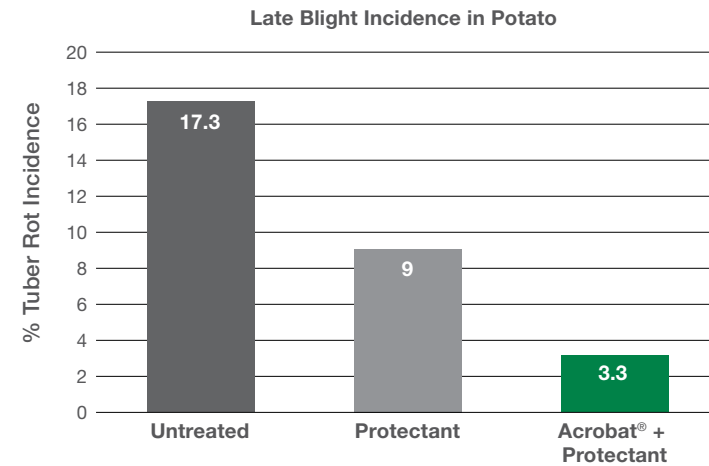
USE RATE	APPLICATION TIMING
46 to 58.8 acres/case, 305 to 390 mL/ac	Pre-emergence. Apply after planting and before potatoes emerge from the final hilling of the season.

Acrobat®

Fungicide

Excellent control of late blight in potatoes, both in the field and into storage.

- Anti-sporulant: kills late blight and tuber rot spores in soil and on the plant by disrupting fungal cell walls
- Highly systemic activity that protects the plant as it grows
- Rapidly rainfast to control late blight even in adverse weather



Source: University and third-party research (n=7)

USE RATE	APPLICATION TIMING
10 acres/bag, 182 g/ac ¹	5 to 10 day interval

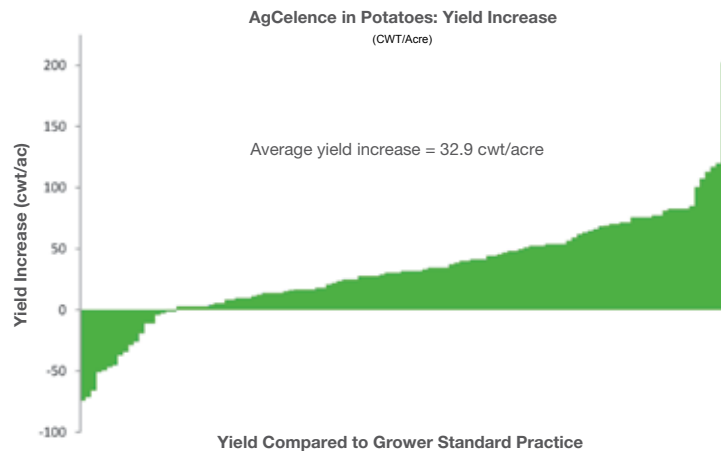
¹ Always apply Acrobat fungicide as a tank mix with a protectant/contact fungicide such as Polyram® DF or Bravo® to protect against early blight and for resistance management.

Cabrio Plus

Fungicide

Stop early and late blight in potatoes and get the proven benefits¹ of **AgCelence**.

- Two modes of action for control of early and late blight
- Unique **AgCelence**[®] benefits¹ for increased yield potential²



Source: In-field scale BASF trials, n=124, 2006-2014

USE RATE	APPLICATION TIMING
22 acres/bag, 0.91 kg/ac	<p>7 to 14 day interval (early blight) 7 to 10 day interval (late blight)</p> <p>Make first application at tuber initiation before row closure. Subsequent applications can be made:</p> <ol style="list-style-type: none"> 1. At row close to allow good coverage of the lower canopy where disease usually starts 2. Before harvest if the crop is under stress from heat/cold/drought conditions

¹ **AgCelence** benefits refer to products that contain the active ingredient pyraclostrobin.

² All comparisons are against grower standard, unless otherwise stated.

Cantus

Fungicide

Proven, effective control of early blight in potatoes.

- Systemic and rapidly rainfast to ensure long-lasting control under adverse conditions such as moderate temperatures and high humidity
- Protects treated tissue as it expands
- Effective tank-mix partner with protectant fungicides

USE RATE	APPLICATION TIMING
88.8 to 160 acres/case, 71 to 127 g/ac	Apply preventatively from tuber initiation through row closure as part of a regular control program for early blight.



Unparalleled rewards
and support.



Maximizing your rewards in 2016 is easy. Here's how.

To receive your rebate, purchase a **minimum of 250 total acres** of any BASF crop solution products. The purchase must consist of at least two of the following Qualifying Products, each with a minimum of 40 acres.

HERBICIDES

Armezon[®]

Herbicide

Distinct[®]

Herbicide

Outlook[®]

Herbicide

Assignment[®]

Herbicide

Eragon LQ

Powered by **Kixor[®]** Herbicide

Poast Ultra

Herbicide

Banvel II

Herbicide

Frontier Max

Herbicide

Prowl H2O

Herbicide

Basagran Forté

Herbicide

Integrity[®]

Powered by **Kixor[®]** Herbicide

Pursuit[®]

Herbicide

Clean Sweep[®]

Herbicide

Marksman[®]

Herbicide

Conquest LQ

Herbicide

Optill[®]

Powered by **Kixor[®]** Herbicide

FUNGICIDES

Cabrio Plus

Fungicide

Sercadis[®]

Fungicide

Cantus[®] and/or Lance[®]

Fungicide

Fungicide

Twinline[®]

Fungicide

Caramba[®]

Fungicide

Priaxor[®] and/or Headline[®]

Fungicide

Fungicide

INOCULANTS

HiStick N/T

The Biostacked[®] Inoculant

Nodulator PRO

The professional Biostacked[®] Inoculant system

CALCULATE YOUR SAVINGS	Total Product Purchase Acres*	2 Qualifying Products	3 Qualifying Products	4 Qualifying Products	5+ Qualifying Products
	250 – 999 acres	3%	4%	5%	6%
	1,000 – 2,999 acres	4%	5%	6%	7%
	3,000+ acres	5%	6%	7%	8%

*Total product purchase acres = combination of any BASF products purchased and their associated acres (refer to table of products in #6 under "Qualifying Products and Related Conditions" within complete Terms and Conditions on the pages that follow.

ACTION PACKED OFFER

Save \$3.33/acre on matching acres of:

(i) Conquest[®] LQ with Frontier[®] Max **and/or** Prowl[®] H2O[‡] **and/or** (ii) Clean Sweep[®] with Frontier Max **and/or** Prowl H2O[‡]

[‡] In addition to the 2016 AgSolutions[®] Rewards Program rebate of 3% to 8%.



BASF Canada stands behind our products. Through our **AgSolutions**® Product Assurance we will support customers who have applied our products according to label recommendations and did not receive reasonable product performance.

A partial list of supported products follows here.

BASF Corn Products		Re-spray Support Level
Glyphosate-Tolerant (GT) Corn	Integrity <small>Powered by Kixor[®] Herbicide</small> (high rate only)	\$4/acre or \$10/acre for Armezon [®]
	Marksman <small>Herbicide</small> + glyphosate ¹	\$4/acre
	Prowl H2O <small>Herbicide</small> + Marksman <small>Herbicide</small> + glyphosate ¹	\$4/acre
	Armezon <small>Herbicide</small> + atrazine + glyphosate ¹	\$4/acre
Conventional Corn	Frontier Max <small>Herbicide</small> + Marksman ² <small>Herbicide</small>	100% (up to a maximum of \$26/acre)
	Prowl H2O <small>Herbicide</small> + Marksman ² <small>Herbicide</small>	100% (up to a maximum of \$26/acre)

BASF Soybean Products		Re-spray Support Level
Glyphosate-Tolerant (GT) Soybeans	Assignment ³ <small>Herbicide</small>	\$4/acre ⁴
Conventional IP Soybeans	Prowl H2O <small>Herbicide</small> + Conquest LQ <small>Herbicide</small>	\$10/acre for grass escapes \$20/acre for broadleaf weed escapes
	Frontier Max <small>Herbicide</small> + Conquest LQ <small>Herbicide</small>	\$10/acre for grass escapes \$20/acre for broadleaf weed escapes
	Prowl H2O <small>Herbicide</small> followed by Clean Sweep <small>Herbicide</small>	\$10/acre for grass escapes \$20/acre for broadleaf weed escapes
	Frontier Max <small>Herbicide</small> followed by Clean Sweep <small>Herbicide</small>	\$10/acre for grass escapes \$20/acre for broadleaf weed escapes
	Optill <small>Powered by Kixor[®] Herbicide</small> + Prowl H2O <small>Herbicide</small> <u>OR</u> Frontier Max <small>Herbicide</small>	\$7/acre for grass escapes \$13/acre for broadleaf weed escapes
	Conquest LQ <small>Herbicide</small>	\$10/acre
	Clean Sweep <small>Herbicide</small>	\$10/acre

¹ For post-emergent applications. ² For high rate, pre-emergent applications only. ³ For post-emergent control in glyphosate-tolerant soybeans.

⁴ Support for residual control of eastern black nightshade, velvetleaf and redroot pigweed.

Compensation mentioned above for BASF products for use in corn and soybeans will not exceed cost of re-spray product.

Always read and follow label directions. For full details on the products and use rates BASF supports, and the support process, please contact your BASF Sales Representative or call **AgSolutions** Customer Care at 1-877-371-BASF (2273).

1. **Offer Overview:** Subject to the terms, conditions and restrictions set forth below, BASF Canada Inc. ("BASF") is offering (the "Offer") each Eligible Participant (as defined below in section 3) the opportunity to receive a Rebate (the "Rebate") in an amount to be calculated by BASF as being between 3% and 8% off the Suggested Retail Price ("SRP"), exclusive of taxes, of each case of Qualifying Product (as defined below in section 4b), when the Eligible Participant makes a purchase (from an authorized Eastern Canadian retailer at the SRP during the Offer Period, as defined below in section 2) that consists of: (i) a minimum of two hundred and fifty (250) acres of Qualifying Products (as defined below in section 4b); and (ii) at least two (2) of those Qualifying Products are each purchased at a minimum quantity of forty (40) acres. The value of the Rebate that an Eligible Participant is eligible to receive pursuant to this Offer will be calculated by BASF, in its sole and absolute discretion, in accordance with the terms and conditions of these Official Terms and Conditions (the "Terms").

2. **Offer Period:** The Offer begins October 1, 2015 at 7:00 a.m. Eastern Time ("ET") and ends September 30, 2016 at 11:59 p.m. ET (the "Offer Period").

3. **Eligibility:** The Offer is open to Canadian growers who: (i) reside in Ontario, New Brunswick, Nova Scotia, Newfoundland and Labrador, Prince Edward Island, British Columbia (excluding the Peace River Region of British Columbia) and Quebec; (ii) are the owner, operator or designated representative of a farm (the "Farm"); and (iii) have reached the legal age of majority in their province of residence (each, an "Eligible Participant"). Employees of BASF's advertising agencies and those residing with them (whether related or not) are not eligible to participate in this Offer. These Terms govern this Offer and must be followed by all Eligible Participants at all times. By agreeing to participate in the Offer, each Eligible Participant is signifying his/her agreement to comply with, and be legally bound by, these Terms.

4. **How to Qualify:** To qualify for the Offer and be eligible to receive a Rebate, an Eligible Participant must:

- Comply with all of the terms and conditions set forth in these Terms (as determined by BASF in its sole and absolute discretion); and
- During the Offer Period, make a purchase (from an authorized Eastern Canadian retailer at the SRP during the Offer Period) that consists of:

- A minimum of two hundred and fifty (250) acres of the following Qualifying Products (the "Qualifying Product(s)"); and
Inoculants: HISTICK[®] N/T and/or NODULATOR[®].

Herbicides: ARMEZON[®], ASSIGNMENT[®], BANVEL[®] II, BASAGRAN[®], BASAGRAN FORTE, CLEAN SWEEP[®], CONQUEST[®] LQ, DISTINCT[®], ERAGON[®] LQ, FRONTIER[®] MAX and/or OUTLOOK[®], INTEGRITY[®], MARKSMAN[®], OPTILL[®], POAST[®] ULTRA, PROWL[®] H2O, and PURSUIT[®].

Fungicides: CABRIO PLUS, CANTUS[®] and/or LANCE[®], CARAMBA[®], PRIAXOR[®] and/or HEADLINE[®], SERCADIST[™], and TWINLINE[®].

- At least two (2) of those Qualifying Products are each purchased at a minimum quantity of forty (40) acres.

By way of example only, if an Eligible Participant purchases 60 acres of INTEGRITY + 80 acres of ARMEZON + 160 acres of PRIAXOR, then he/she would be eligible to receive a Rebate pursuant to the Terms of this Offer.

By way of example only, if an Eligible Participant purchases 60 acres of INTEGRITY + 80 acres of ARMEZON, then he/she would not be eligible to receive a Rebate pursuant to the Terms of this Offer.

5. **Rebate Percentage Calculation:** To determine the Rebate Percentage Value (the "Rebate Percentage Value") that an Eligible Participant is eligible to receive pursuant to the Terms of this Offer, BASF will:

- Determine the total number of acres for Qualifying Products that were purchased by the Eligible Participant from an authorized Eastern Canadian retailer at the SRP in accordance with these Terms (the "Total Number of Acres");
- Determine the total number of Qualifying Products that were purchased (each at a minimum quantity of forty (40) acres) by the Eligible Participant from an authorized Eastern Canadian retailer at the SRP in accordance with these Terms (the "Total Number of Qualifying Products"); and
- Refer to the following Chart:

Total Number of Acres	Total Number of Qualifying Products			
	2	3	4	5+
250 – 999 acres	3%	4%	5%	6%
1,000 – 2,999 acres	4%	5%	6%	7%
3,000 + acres	5%	6%	7%	8%

The Rebate Percentage Value shown in the chart above represents the percentage that BASF will use to calculate the amount of the Rebate that an Eligible Participant is eligible to receive off the SRP, exclusive of taxes, of each case of Qualifying Product that was purchased in accordance with these Terms.

By way of example only, if BASF determines that an Eligible Participant has: (i) a Total Number of Acres of 2400; and (ii) a Total Number of Qualifying Products of three (3); then that Eligible Participant would have a Rebate Percentage Value of 5% and would therefore be eligible to receive 5% off the SRP, exclusive of taxes, of each case of the three (3) Qualifying Products that were purchased in accordance with these Terms.

All Rebate calculations will be based on SRP in Eastern Canada multiplied by the corresponding Rebate Percentage Value. Retailers have complete autonomy to determine the resale pricing for the products described herein and may choose to sell such products at prices which are different from those suggested by BASF. Rebates will be calculated on a per acre basis, using all Qualifying Products purchased, including partial cases.

Prior to qualifying for the Offer, the Eligible Participant will be required to accept and agree to be legally bound by these Terms. In addition, the Eligible Participant will have the opportunity to agree to the terms and conditions contained within the BASF Grower Privacy Consent and the BASF Commercial Electronic Messages Consent (the "Consent Forms"). Copies of the Consent Forms can be obtained by contacting AgSolutions[®] Customer Care at 1-877-371-BASF (2273). An Eligible Participant may subsequently withdraw his/her consent to receive electronic communications at anytime without affecting their eligibility for this Offer.

If an Eligible Participant completes all of the foregoing steps in accordance with these Terms (as determined by BASF in its sole and absolute discretion), then the Eligible Participant will be eligible to qualify for the Offer and to receive the Rebate. **There is a limit of one (1) Rebate per Farm.**

6. **Qualifying Products and Related Conditions:** For the purposes of the Offer and the Rebate, Qualifying Products will have the following label rates:

Qualifying Product	Unit Size	Rate/Acre	Acres/Unit	Qualifying Product	Unit Size	Rate/Acre	Acres/Unit
ARMEZON	Jug	0.015 L	40	NODULATOR PRO	Case	–	143
ASSIGNMENT	Case	–	20	HISTICK N/T Liquid	Case	–	143
BANVEL II	Case	0.5 L	40	HISTICK N/T SA Peat	Case	–	143
BASAGRAN	Case	0.9 L	20	INTEGRITY	Case	0.3 L	60
BASAGRAN FORTE	Case	0.9 L	22	LANCE	Case	0.226 kg	25
CABRIO PLUS	Case	910 grams	22	MARKSMAN	Case	1.0 L	20
CANTUS	Case	70 grams	160	OPTILL	Case	0.06 kg	120
CARAMBA	Case	0.4 L	40	OUTLOOK	Case	0.350 L	52
CLEAN SWEEP	Case	–	20	POAST ULTRA	Case	0.19 L	80
CONQUEST LQ	Case	–	40	PRIAXOR	Case	–	160
DISTINCT	Case	0.115 kg	40	PROWL H2O	Case	0.89 L	20
ERAGON	Case	0.0146 kg	120	PURSUIT	Case	0.168 L	39
ERAGON LQ	Case	0.0295 L	160	SERCADIS	Case	0.135 L	20
FRONTIER MAX	Case	0.3 L	60	TWINLINE	Case	0.2 L	80
HEADLINE	Case	0.16 L	80				

7. **Verification:** BASF reserves the right, in its sole and absolute discretion, to require proof of identity and/or eligibility (in a form acceptable to BASF): (i) for the purposes of verifying an Eligible Participant's eligibility to participate in this Offer; (ii) for the purposes of verifying the legitimacy of any Data (as defined below in Section 9b), Qualifying Products and/or other information; and/or (iii) for any other reason BASF deems necessary, in its sole and absolute discretion, for the purposes of administering this Offer in accordance with the letter and spirit of these Terms. Failure to provide such proof to the complete satisfaction of BASF within the timeline specified by BASF may result in disqualification in the sole and absolute discretion of BASF. All determinations regarding whether or not an Eligible Participant is eligible to earn a Rebate in accordance with these Terms will be made by BASF in its sole and absolute discretion. If it is discovered by BASF (using any evidence or other information made available to or otherwise discovered by BASF) that any Eligible Participant (or any person or entity purporting to be an Eligible Participant) has attempted to use multiple names, identities and/or any other means not expressly sanctioned by these Terms to participate in or disrupt this Offer, then he/she may be disqualified from the Offer in the sole and absolute discretion of BASF.

8. **Notification and Confirmation:** If an Eligible Participant has been deemed by BASF, in its sole and absolute discretion, to be eligible to qualify for the Offer and to receive a Rebate, then the Eligible Participant may be notified by a representative of BASF. If an Eligible Participant: (i) cannot accept (or is unwilling to accept) the Rebate for any reason; and/or (ii) is determined to be in violation of the letter and/or spirit of these Terms (all as determined by BASF in its sole and absolute discretion); then the Rebate shall, in the sole and absolute discretion of BASF, be forfeited in its entirety and the Eligible Participant will be disqualified from participating in the Offer.

9. **Additional Conditions:**

- This Offer does not apply to any Qualifying Products that are returned for any reason whatsoever or for any Qualifying Products purchased for resale.
- Retailers are required to submit customer transactional data relating to Orders and Purchase Transactions (the "Data") on behalf of Eligible Participants to BASF. Offer eligibility will be determined by BASF, in its sole and absolute discretion, using this Data. All Data must be submitted by the retailer to BASF by no later than October 9, 2016 in order for such Data to be eligible for the purposes of this Offer.
- If an Eligible Participant who has earned a Rebate pursuant to this Offer returns any Qualifying Products to a retailer after September 30, 2016, then the Eligible Participant shall be required to return or repay the value of the Rebate (or the applicable portion of the Rebate) by contacting AgSolutions[®] Customer Care at 1-877-371-BASF (2273). Failure to do so will result in a deduction from the Eligible Participant's future year's program rebate(s).
- Any of the Qualifying Products purchased as part of any other BASF grower programs and/or offers, are not eligible for any additional reward(s) as part of this Offer.
- The following combinations of Qualifying Products will each count as one (1) inter-changeable Qualifying Product for the purposes of this Offer:

Qualifying Product Combinations	One (1) inter-changeable Qualifying Product for the purposes of this Offer
HISTICK N/T Liquid, HISTICK N/T Self-adhering Peat	HISTICK
ERAGON LQ, ERAGON	ERAGON LQ

- Combined purchases of the following Qualifying Products that add up to at least forty (40) acres will count as one (1) inter-changeable Qualifying Product for the purposes of this Offer: (i) HISTICK and NODULATOR; (ii) FRONTIER MAX and OUTLOOK; (iii) CANTUS and LANCE; and (iv) HEADLINE and PRIAXOR.

10. **Action Packed Offer Bonus:** In addition to the Offer and Rebate otherwise described in these Terms, BASF is also offering each Eligible Participant the opportunity to receive an additional bonus reward (a "Bonus Reward") consisting of \$3.33 CDN per acre of eligible BASF herbicide products that are purchased as Qualifying Products pursuant to these Terms. An Eligible Participant that otherwise qualifies for a Rebate in accordance with these Terms (as determined by BASF in its sole and absolute discretion) will be eligible to earn a Bonus Reward when he/she purchases Qualifying Products that consist of matching acres of: (i) CONQUEST LQ with FRONTIER MAX and/or PROWL H2O; and/or (ii) CLEAN SWEEP with FRONTIER MAX and/or PROWL H2O. For the avoidance of any doubt, the Bonus Reward is limited only to the

matching acres of the Qualifying Products noted directly above in this section 10 and does not apply to all herbicide acres purchased (i.e. only matching acres). The Bonus Reward is in addition to the Rebate – but, in order to qualify for the Bonus Reward the Eligible Participant must first qualify for a Rebate in accordance with these Terms (as determined by BASF in its sole and absolute discretion)

11. **General Conditions:** Please allow a minimum of eight (8) weeks for the Rebate to be received from the time the Data is sent to BASF by a retailer. All Data is subject to verification and will be considered void if it cannot be verified to the complete satisfaction of BASF. The Rebate must be accepted as awarded and is not transferable or assignable. No substitutions, except at BASF's option. Without limiting the generality of the foregoing, BASF reserves the right, in its sole and absolute discretion, to substitute the Rebate or a component thereof with a reward of equal or greater retail value.
12. Rebate/Bonus Reward cheques with a value of less than \$100 CDN will not be processed.
13. This Offer is subject to all applicable federal, provincial and municipal laws. Void where prohibited or restricted by law. The decisions of BASF with respect to all aspects of this Offer are final and binding on all Eligible Participants without right of appeal.
14. BASF Canada Inc., its parent companies, associated and affiliated companies, suppliers, advertising/promotion agencies and any other entity involved in the development, production, administration or fulfillment of the Offer, and each of their respective officers, directors, employees, agents, representatives, successors and assigns (collectively, the "**Released Parties**") will not be liable for: (i) any late, lost, misdirected, delayed, incomplete, incompatible or misdirected Data and/or other information (all of which is void); (ii) any failure(s), malfunction(s) or other problem(s) of any nature whatsoever; (iii) the failure of any order, purchase transaction, Data and/or other element(s) of this Offer to be received, captured or recorded for any reason whatsoever; (iv) anyone being incorrectly and/or mistakenly identified as a Rebate/Bonus Reward recipient or eligible Rebate/Bonus Reward recipient; and/or (v) any combination of the above.
15. BASF reserves the right, in its sole and absolute discretion, to withdraw, suspend or amend this Offer in any way, or to amend these Terms in any way, without prior notice or obligation, in the event of: (i) any cause beyond the reasonable control of BASF that interferes with the proper conduct of this Offer as contemplated by these Terms, including, without limitation, any error, problem, tampering, unauthorized intervention, fraud or failure of any kind whatsoever; (ii) any accident, printing, administrative, or other error of any kind; and/or (iii) for any other reason that BASF deems necessary, in its sole and absolute discretion, to ensure that this Offer is conducted in accordance with the letter and spirit of these Terms. Any attempt to undermine the legitimate operation of this Offer in any way (as determined by BASF in its sole and absolute discretion) may be a violation of criminal and civil laws and should such an attempt be made, BASF reserves the right to seek remedies and damages to the fullest extent permitted by law.
16. BASF reserves the right, in its sole and absolute discretion, to require that an Eligible Participant sign BASF's form of declaration and release form prior to being confirmed as the recipient of the Rebate/Bonus Reward.
17. By participating in this Offer and accepting the Rebate/Bonus Reward, each Eligible Participant (i) confirms compliance with these Terms; (ii) acknowledges acceptance of the Rebate/Bonus Reward (as awarded); and (iii) releases the Released Parties from any and all liability in connection with this Offer, the Eligible Participant's participation herein and/or the awarding and use/misuse of the Rebate/Bonus Reward or any portion thereof.
18. If an Eligible Participant who is eligible to receive the Rebate/Bonus Reward is deemed to be in violation of these Terms (as determined by BASF in its sole and absolute discretion), then the Eligible Participant may, in the sole and absolute discretion of BASF, be disqualified (and, if disqualified, will forfeit all rights to the Rebate/Bonus Reward).
19. BASF reserves the right, in its sole and absolute discretion, to adjust any of the dates, timeframes and/or other Offer mechanics stipulated in these Terms, to the extent necessary, for purposes of verifying compliance by any Eligible Participant or other information with these Terms, or as a result of any problems, or in light of any other circumstances which, in the opinion of BASF, in its sole and absolute discretion, affect the proper administration of the Offer as contemplated in these Terms, or for any other reason.
20. In the event of any discrepancy or inconsistency between the terms and conditions of these Terms and disclosures or other statements contained in any Offer-related materials and/or any instructions or interpretations of these Terms given by any representative of BASF, the terms and conditions of these Terms shall prevail, govern and control to the fullest extent permitted by law.
21. By participating in this Offer, each Eligible Participant expressly consents to BASF, its agents and/or representatives, storing, sharing and using any personal information submitted only for the purpose of administering the Offer and in accordance with BASF's privacy policy (<http://www.basf.ca/group/corporate/ca/en/about-basf/worldwide/north-america/Canada/general/privacy>). This section does not limit any other consent(s) that an individual may provide to BASF or others in relation to the collection, use and/or disclosure of their personal information.
22. BASF reserves the right, in its sole and absolute discretion, to take whatever measures or actions it deems necessary to help ensure that the Offer is administered in accordance with the letter and spirit of these Terms. **ANY INDIVIDUAL OR ENTITY DEEMED BY BASF AT ANY TIME TO BE IN VIOLATION OF THE LETTER AND/OR SPIRIT OF THESE TERMS FOR ANY REASON WHATSOEVER IS SUBJECT TO DISQUALIFICATION IN THE SOLE DISCRETION OF BASF.**
23. The invalidity or unenforceability of any provision of these Terms shall not affect the validity or enforceability of any other provision. In the event that any provision is determined to be invalid or otherwise unenforceable or illegal, these Terms shall otherwise remain in effect and shall be construed in accordance with the terms as if the invalid or illegal provision were not contained herein.
24. To the fullest extent permitted by applicable law, all issues and questions concerning the construction, validity, interpretation and enforceability of these Terms or the rights and obligations of Eligible Participants, BASF or any of the other the Released Parties in connection with the Offer will be governed by and construed in accordance with the domestic laws of the Province of Ontario and the federal laws of Canada applicable therein, without giving effect to any choice of law or conflict of law rules or provisions that would cause the application of any other jurisdiction's laws. The parties hereby consent to exclusive jurisdiction and venue of the courts located in Ontario in any action to enforce (or otherwise relating to) these Terms or relating to this Offer.
25. **AgSolutions** Product Assurance is offered on all the following BASF products:
CORN PRODUCTS: ARMEZON, INTEGRITY, MARKSMAN, PROWL H2O, FRONTIER MAX.
SOYBEAN PRODUCTS: ASSIGNMENT, CLEAN SWEEP, CONQUEST LQ, FRONTIER MAX, OPTILL, PROWL H2O.

In order to be eligible for consideration for compensation when product performance expectations are not met with BASF products, inquiries must be received by BASF no later than July 31, 2016. BASF reserves the right to determine if weed control performance warrants compensation. For any questions on product performance please contact your local BASF Sales Representative, retailer, or **AgSolutions** Customer Care at 1-877-371-BASF (2273) prior to the above deadline.

Notes:



We create chemistry

Always read and follow label directions.

AgSolutions, ACROBAT, BANVEL, BIOSTACKED, CONQUEST, DISTINCT, FRONTIER, HEADLINE, INTEGRAL, MARKSMAN, and PROWL are registered trade-marks of BASF Corporation; CARAMBA is a registered trade-mark of BASF Agro B.V.; PURSUIT is a registered trade-mark of BASF Agrochemical Products B.V.; SERCADIS is a trade-mark, and **AgCelence**, ARMEZON, ASSIGNMENT, BASAGRAN, CABRIO, CANTUS, ERAGON, INTEGRITY, KIXOR, LANCE, OPTILL, OUTLOOK, POAST, POLYRAM, PRIAXOR, TWINLINE, and XEMIUM are registered trade-marks of BASF SE; HISTICK is a registered trade-mark of Becker Underwood; NODULATOR is a registered trade-mark of Becker Underwood Canada Ltd.; all used with permission by BASF Canada Inc. CLEAN SWEEP, and MERGE are registered trade-marks of BASF Canada Inc. ACROBAT, CABRIO PLUS, CANTUS, CARAMBA, HEADLINE, LANCE, PRIAXOR, SERCADIS, and/or TWINLINE fungicides should be used in a preventative disease control program. Bravo is a registered trade-mark of Syngenta Group Company. Roundup WeatherMAX is a registered trade-mark of Monsanto Technology LLC, Monsanto Canada Inc. licensee. © 2015 BASF Canada Inc.